



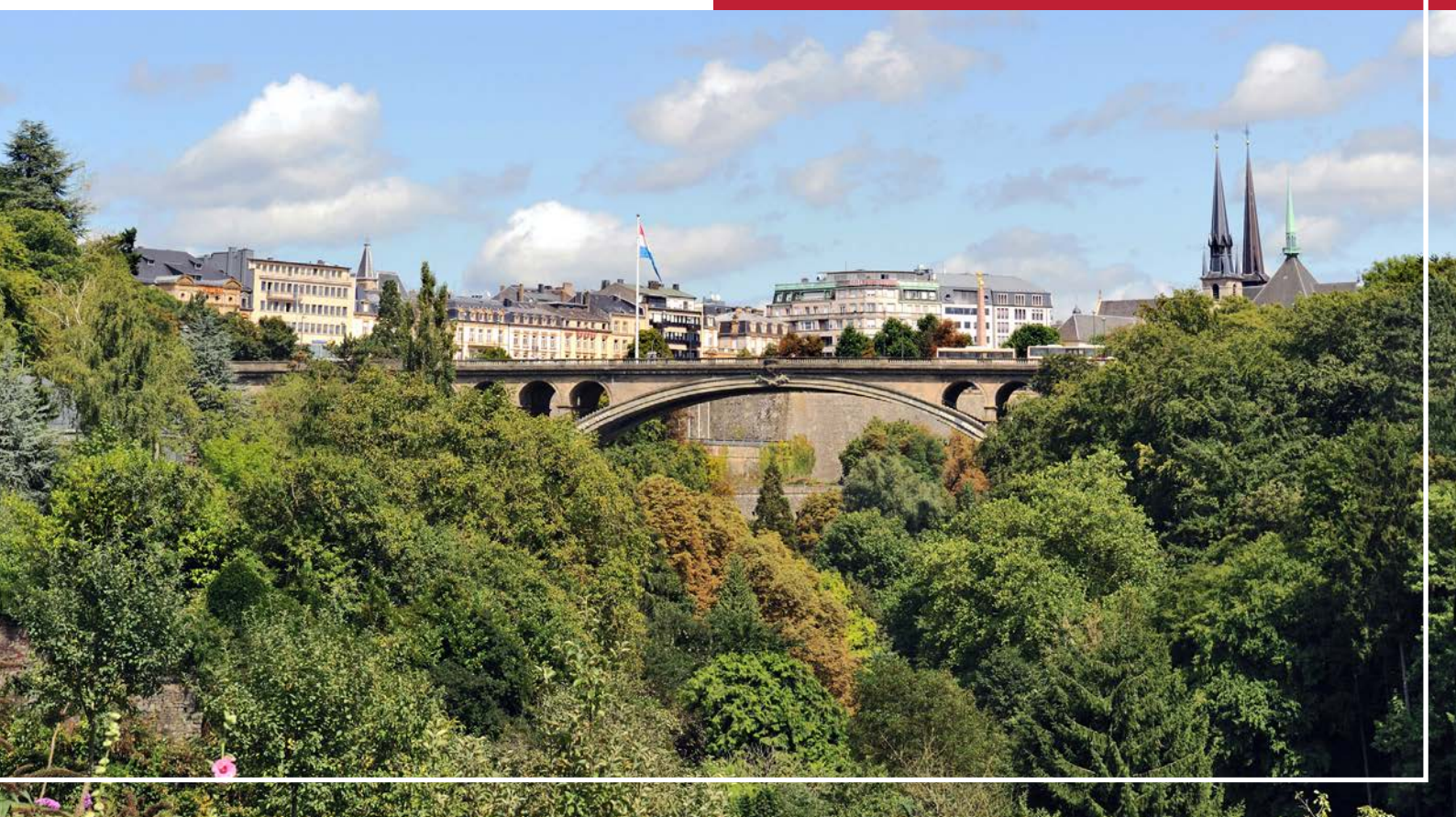
# Cámara

Official Spanish Chamber of Commerce  
in Belgium and Luxembourg

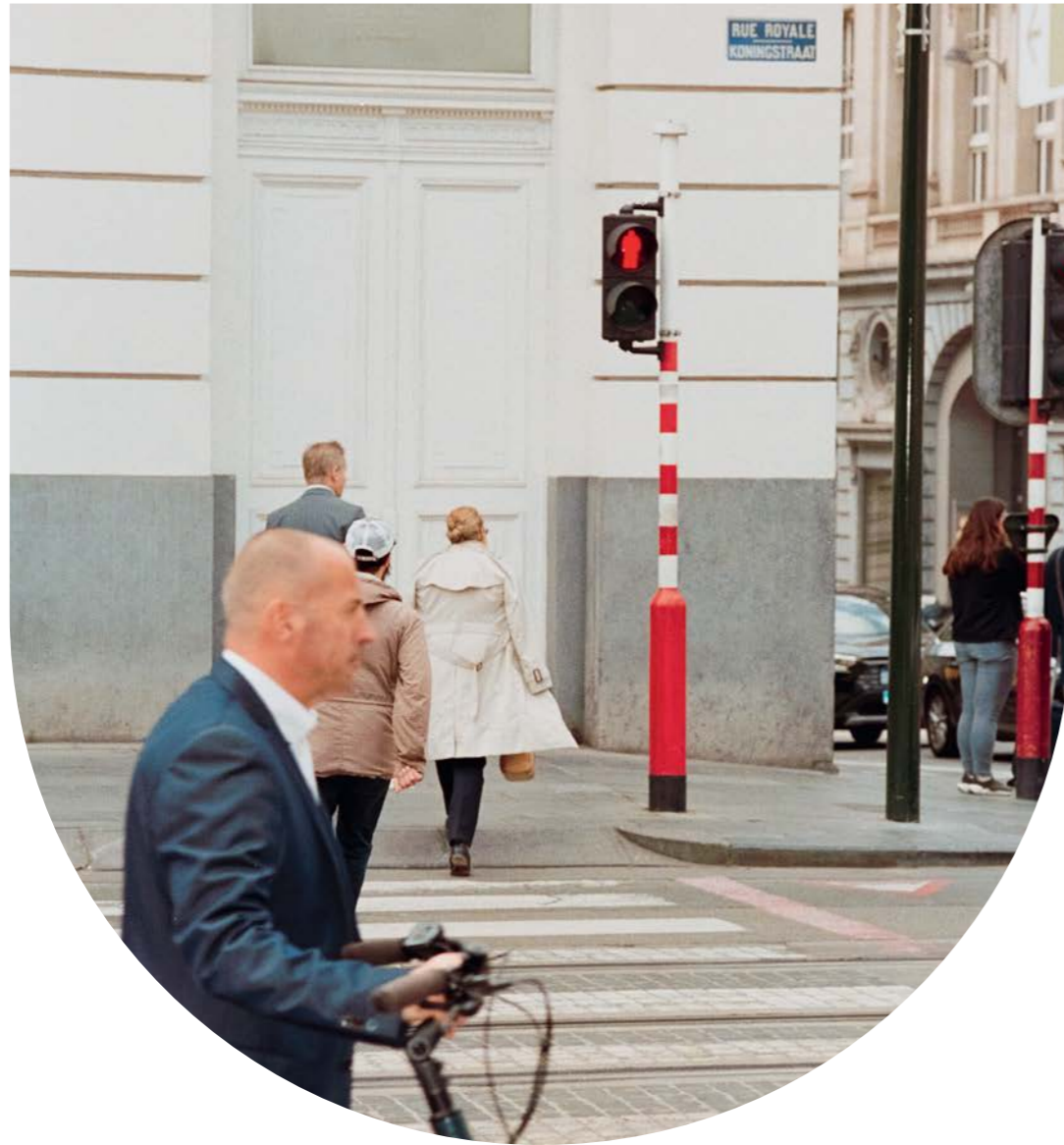
WITH THE SUPPORT AND RECOGNITION OF



# YEARBOOK 2025



# Entrepreneurs welcome



Bring your boldness to our city  
& visit **why.brussels** to set up your company

**BRUSSELS**



## YEARBOOK

### 2025

**Texts:** Official Spanish Chamber of Commerce in Belgium and Luxembourg

**Design and Layout:** Official Spanish Chamber of Commerce in Belgium and Luxembourg; Jon Guezala Varela

**Images:** Official Spanish Chamber of Commerce in Belgium and Luxembourg; Pexels.com; Pixabay.com; Freepik.com; Vecteezy.com

The Chamber would like to thank all the interns who joined us in 2024 for their work: Alejandro, Carlos, Sofía, Elvira, Pablo, Guillermo, Miriam, Anaïs and Sandra.

#### Belgium

Avenue des Art, 1, 9<sup>e</sup> - 1210 Brussels  
Email: [info@e-camara.com](mailto:info@e-camara.com)  
Tel.: +32 2 517 17 40

#### Luxembourg

Email: [luxemburgo@e-camara.com](mailto:luxemburgo@e-camara.com)  
Tel.: +352 661 404 399

© 2025 - Official Spanish Chamber of Commerce in Belgium and Luxembourg

# CONTENTS

- 01** President's Letter  
P. 5
- 02** Board of Directors  
P. 6

## Services of the Chamber

- 03** Who are we?  
P. 12
- 04** Advantages of joining the Chamber  
P. 13
- 05** Contact network  
P. 14
- 06** Main services  
P. 15
- 07** Communication tools  
P. 17
- 08** Business centre  
P. 18
- 09** Membership categories  
P. 20

## Activity report

- 10** Business Circle  
P. 24
- 11** Conferences  
P. 28
- 12** Trainings  
P. 30
- 13** Spanish Financial Forum  
P. 32
- 14** Events in Luxembourg  
P. 37
- 15** Commercial activities  
P. 39
- 16** Company of the Year  
P. 40
- 17** FEDECOM  
P. 43
- 18** Projects  
P. 44

## Members of the Chamber

- 19** Member interviews  
P. 60
- 20** Benefactor and sponsor members  
P. 66
- 21** Directory of Members by Activity  
P. 68

# President's letter



Dear members,

After my re-election last June as president of our Chamber, it is an honor to once again be the prologue of our yearbook. Once again this annual event allows me to look back and review the activity of our Chamber over the last 12 months. And I do so once again this year with satisfaction and pride in the work done by our team, which last year organized 11 training sessions, 12 trade missions and 50 events with a total of around 3,100 participants.

All this has been reflected in the continued confidence of our member companies, which year after year renew their membership, and in the incorporation of new companies. We now have 346 members, an increase of almost 10% over the previous year. All this despite a challenging economic environment. As is the geopolitical environment. The arrival of Trump in the White House has not only brought an additional dose of uncertainty, but also chaos.

The trade war that has begun, which is no less worrying for being expected, will negatively affect our companies. At times like these, chamber entities are more necessary than ever to help companies, especially SMEs, to weather the storm and navigate the extremely turbulent waters that international trade is today. And also to identify and land new opportunities, which will also arise.

Strong institutions are also necessary. The recent formation of new governments in Luxembourg and Belgium is good news, as is the formation of new regional governments, which are essential in a state as decentralized as Belgium. The establishment of channels of dialogue with the new governments that can benefit Spanish companies over the next five years will be a priority for our Chamber. All this in the context of a new institutional cycle within the European Union.

We will also continue to highlight the great work and leadership of Spanish companies and professionals. In 2024 we recognized Sener, a company unknown to the general public, but a world leader in the fields of energy, space and defense.

We will also continue to promote opportunities for Spanish professionals that will provide our companies with better access to the raw material for business success: talent. A good example is the training program we launched in 2024 in Luxembourg in the financial sector, which will be continued in September 2025 in an even more ambitious format.

In spite of the difficulties, 2025 looks exciting and with the ambition that our Chamber will continue to grow. The brand new headquarters, to which we will move this spring, should help in this regard. Growth not seen as an end in itself but as a means to continue facilitating trade and investment between Spain and Belux. And we will continue to do so, as has been the case so far, in close collaboration with our embassies and ambassadors in both countries, as well as with the Economic and Commercial Office and the Permanent Representation, convinced that only unity and good coordination is strength.

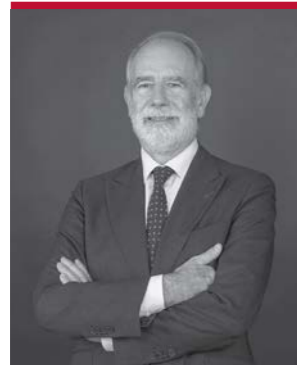
Good reading!

**Pablo López Álvarez**

President of the Official Spanish Chamber of Commerce in Belgium and Luxembourg

# Board of Directors

## Honorary Presidents



**Alberto Antón Cortés**  
Ambassador of Spain to Belgium



**José María Rodríguez Coso**  
Ambassador of Spain to Luxembourg

## President



**Pablo López Álvarez**  
FTI Consulting  
Management Committee

## Honorary Vicepresident



**María Ortiz**  
Economic and Commercial Counsellor, Spanish Embassies in Belgium and Luxembourg

## Vicepresidents



**Abelardo García González**  
BBVA  
Management Committee



**Joseba Arriortua**  
Management Committee

## Treasurer



**Bert Dehandschutter**  
Modo law  
Management Committee

## Secretary General



**Marta González Benguria**  
Management Committee

## Past-President



**Juan Rodríguez-Villa Matons**

# Board members



**Eva Chamizo Llatas**  
Iberdrola



**Susana Garayoa**  
Zabala Innovation



**Margarita González**  
Meteora



**Juan Alfonso Herrero**  
Mercadona



**Eduardo Lanza**  
Telefónica



**Álvaro Laorden**  
CACEIS



**David Luengo Riesco**  
Indra



**Asier Marquina Sánchez**  
ArcelorMittal



**Manuel Menéndez Barrero**  
Santander Consumer Bank



**Angel Rebollo**  
Arpa EU Affairs & Communications



**Javier Segura**  
Meliá Luxembourg



**Miguel Troncoso Ferrer**  
Gómez Acebo & Pombo



**Laura Vilches**  
LaLiga



Institutional Board Member

**Miguel Nombela López**  
Spanish Tourist Office

# Luxembourg Management Committee

---

President

**Pablo López Álvarez**

FTI Consulting

Vicepresident

**Joseba Arriortua**

Board members

**Margarita González**

Meteora

**Mónica Hortelano**

Quintet

**Álvaro Laorden**

CACEIS

**Javier Segura**

Meliá Luxembourg

**Jesús Vicente**

Vicente et Fils

Secretary General

**Marta González Benguria**

# Our Team

---

## Marta González Benguria

### Secretary General

Secretary General since 2020, Marta is in charge of coordinating the day-to-day management of the Chamber's operations. During her 11 years in the institution, she has helped many Spanish companies to set up in the BeLux. Marta maintains a permanent contact with members and potential member companies and is always actively looking for new activities and collaborations, that may arise for the Chamber.

In her spare time, she is a movie lover, never says no to a Belgian beer and is planning to start a fund-raising campaign to improve rail links between Belgium and Luxembourg.

[secretariageneral@e-camara.com](mailto:secretariageneral@e-camara.com)

## Sara Sánchez González

### Trade & Business Development Manager

By assisting Spanish companies wishing to set up in the Belgian and Luxembourg markets, Sara coordinates the different commercial promotion actions, in addition to the Chamber's business expansion possibilities. She also participates in the organisation of events and trainings.

Outside the office, she divides her time between chatting in Dutch, planning the crops in her vegetable garden and cooking her signature dish: the "hornazo" from Salamanca.

[sara.sanchez@e-camara.com](mailto:sara.sanchez@e-camara.com)

## Andrea Galante

### Project Manager

Andrea works as a European project manager. In particular, she is in charge of managing and coordinating the SoftImprove, EYE, TEX4.0 and W4TEX projects within the framework of the European Commission's Erasmus+ programme.

In her spare time, she enjoys freediving, cooking and pottery. She also enjoys going to the opera and inline skating, whenever the weather allows it in Brussels.

[andrea.galante@e-camara.com](mailto:andrea.galante@e-camara.com)

## Jon Guezala

### Communications Officer

Jon ensures that the Chamber's communication channels remain content-rich and that members take advantage of the dissemination opportunities included in their membership. He is also responsible for the design and layout of the Chamber's printed publications, such as this Yearbook.

When he is not working, he spends his time playing the guitar, reading novels or perfecting his potato tortilla recipe (with onions, of course).

[comunicacion@e-camara.com](mailto:comunicacion@e-camara.com)





# Services of the Chamber

Who are we?

Advantages of joining the Chamber

Contact network

Main services

New business centre

Communication tools

Membership categories

## Who are we?



The **Official Spanish Chamber of Commerce in Belgium and Luxembourg** is a non-profit association with more than 100 years of history. The first written records attesting to the existence of the entity date back to the early 1920s.

The Chamber plays a significant role in trade and economic relations between **Spain, Belgium and Luxembourg** and its main objective is the development of trade and investments between these three countries.

The Chamber offers its member companies a **wide range of services, as well as facilitating business networking** between them. The Chamber is publicly recognized as one of the most prestigious dialogue tribunes between companies and European institutions, based in Brussels and with a delegation in Luxembourg.

The **management of European programmes** has also gained prominence in recent years among the Chamber's activities and it has specialised in projects for the internationalisation of SMEs, the training of their workers and entrepreneurship.

The Chamber is part of the **Association of Official Spanish Chambers of Commerce in Europe-Africa-Asia-Oceania (FEDECOM)** and maintains a permanent contact with the Spanish Chamber of Commerce, which provides its members the ability to benefit from the Official Spanish Chambers network around the world.

The Chamber is supported by the **Spanish Ministry of Economy, Trade and Enterprise**.



## What does the Chamber do for the companies?

The Chamber offers a wide range of services to both member and non-member companies **including information and support, promotion opportunities, commercial activities and networking events**.

In particular, the Chamber facilitates business through a wide range of commercial services and provides essential **logistical and technical support**. In addition, its events enable companies to **develop and expand their network of professional contacts** and provide essential information on the Belgian, Luxembourgish and Spanish markets.

## Advantages of joining the Chamber

### 1. SUPPORT FOR ACCESS TO THE BELGIAN AND LUXEMBOURG MARKETS

Through its commercial services, one of the Chamber's priorities is to offer technical support to Spanish companies wishing to set up or do business in Belgium and Luxembourg, as well as to strengthen the development of Spanish commercial activity already established in both countries.

In addition, the Chamber facilitates the development of commercial activity between Spain, Belgium and Luxembourg by offering companies a wide range of information, promotion and logistical and administrative support services.



### 2. EXPAND YOUR CONTACT NETWORK

The Chamber organises approximately 60 networking events throughout the year for members. These events provide access to a wide Spanish-Belgian-Luxembourg-European business and institutional network that allows companies to identify potential clients and partners and facilitates dialogue with European institutions.

### 3. INCREASE YOUR VISIBILITY

The Chamber of Commerce offers its members, through its website, newsletter, Yearbook, social networks and mailing campaigns, the opportunity to increase their visibility, as it has more than 6,000 contacts in the Spanish-Belgian-Luxembourgish business environment.

In addition, the Chamber offers its member companies the possibility to jointly sponsor and organise events. The aim is to offer member companies the opportunity to use the independent platform of the Chamber to promote their business, expand their customer base and increase their visibility.



### 4. FACILITATION OF DIALOGUE WITH THE EUROPEAN INSTITUTIONS

Thanks to its "Business Circle" platform, the Chamber is considered one of the most prestigious business networking platforms in Brussels.

The regular organisation of events with high-level representatives of the Commission, the Parliament and other European bodies has made the Chamber a reference organisation for dialogue with the EU institutions.

### 5. CONNECT AND INTERACT

The Chamber's Intranet Zone allows members to access offers, promotions and exclusive information for members, promote their product and/or service through the publication of special offers and connect with other members.

# Collaborating and partner organisations

## BELGIUM



## LUXEMBOURG



## SPAIN



## INTERNATIONAL



# Main services

## Commercial services

The Chamber offers a wide range of services that enable, both member and non-member companies, to strengthen their presence in Belgium, Luxembourg and Spain. These services include:

### 1. Search of business contacts

Through its extensive database, the Chamber compiles lists of companies located in Belgium, Luxembourg and/or Spain, by sector of activity and location.

### 2. Market analysis

In order to study the viability of the product/service in Belgium and/or Luxembourg, the Chamber develops reports with information on the sector, competitor analysis, product positioning, recommendations, as well as any kind of information considered to be of interest to the company.

### 4. Country specific day

In order to promote the existing internationalisation possibilities for companies, the Chamber participates, collaborating with local chambers and business associations, in talks to present business opportunities in the Spanish, Belgian and Luxembourg markets. The main objective of these conferences is to describe the main sectors of interest and to advise on the best way to access these markets.



### 5. Legal assistance

Aimed at all those companies that need a quick answer to a legal question or help, in the whole process of setting up in Belgium and/or Luxembourg, due to the reputed multilingual lawyers that are part of their list of members.

### 6. Job opportunities

The Chamber has a job portal, [www.empleobelux.com](http://www.empleobelux.com), which allows its members to publish their job offers free of charge, to access the database of candidates, to learn relevant information on benefits and recruitment aids in Belgium and Luxembourg and to request free pre-selection support.

### 3. Commercial agenda

The main objective of the agenda developed by the Chamber is the organisation of meetings, both face-to-face and virtual, with potential distributors, institutional bodies and potential partners or manufacturers, depending on the needs of the contracting company.



## Main services

### Events

One of the main objectives of the Chamber is to promote networking among its member companies. To achieve this objective, the Chamber organises a considerable number of events every year and offers companies its extensive experience in this field to advise them in the planning, coordination and execution of these events in BeLux.

#### 1. Business circle

The presence of the Chamber in Brussels and Luxembourg allows the organisation of activities with personalities and political decision-makers of the European and local institutions, bringing Spanish companies closer to and fostering dialogue with representatives of European decision-making bodies and participating in the monitoring of EU and Belgian-Luxembourgian policies.



#### 2. Conferences

These conferences cover a wide range of topics and are generally organised in collaboration with member companies, which are offered the opportunity to use the Chamber's independent platform to promote their company, develop new clients and increase their visibility.

#### 3. Trainings

The Chamber's training activities are designed to offer member companies and their network of contacts unique training activities that respond to their specific needs, either because of the profile of the participants or because of the contents developed.

#### 4. Exclusive events of the Working Committees

Our working groups are spaces for analysis, reflection and debate, where ideas and opinions can be shared in order to deepen the different areas of interest, according to the typology of the members.

There are currently three committees: Competencia Spain, Spanish Financial Forum and the Forums Committee.

#### 5. Breakfasts and afterworks with members

In order to promote networking and encourage the generation of business among its member companies, the Chamber organises breakfasts and afterworks. During these events, participating companies present their activity and interact with other members belonging to sectors of activity of interest to them.

#### 6. Business events

The Chamber organises four corporate events per year: New Year's Cocktail in Brussels, New Year's Cocktail in Luxembourg, Gala Dinner and Company of the Year Award. These events are attended by representatives of companies from Spain, Belgium, Luxembourg and European public bodies.

#### 7. Sporting events

The Chamber organises, in collaboration with its partner companies, sport events that allow its members to connect with other members and companies while having fun.

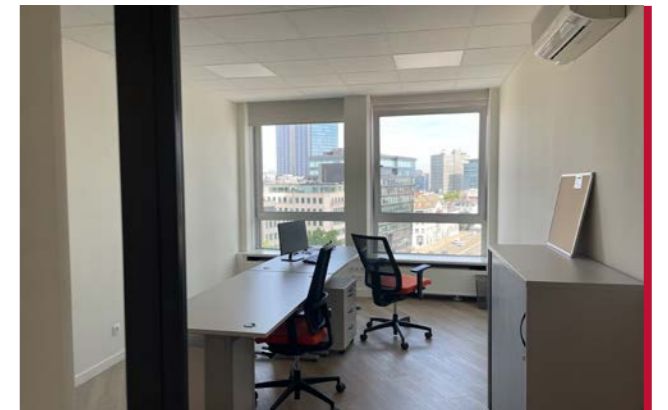
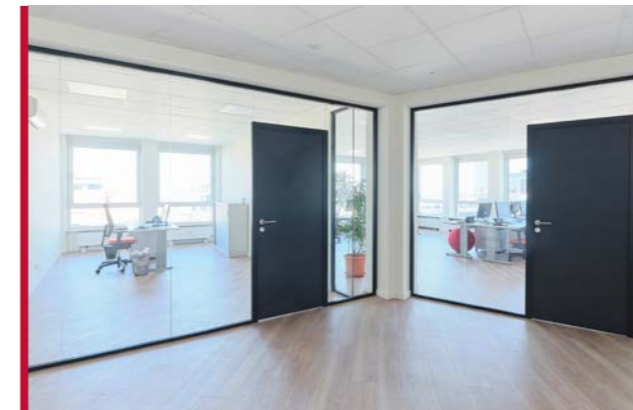
#### 8. Tastings

The Chamber organises, in collaboration with its members, introductory tastings of Spanish wines and olive oils in Belgium and Luxembourg.

## New headquarteres and business centre

In 2025, the Chamber will move its headquarters in Brussels to new, more modern and spacious facilities, with the intention of further improving its daily activity and turning the Chamber into a hub for Spanish companies with activity in Brussels.

The new offices, located in place Madou (Av. des Arts, 1), will become the operational centre of the Chamber, from which it will continue to provide personalised attention. In addition, the facilities will have the capacity to host events of various kinds with greater comfort for attendees and greater capacity.



At the new headquarters, we will continue to offer services of:

1. Commercial postal address and virtual offices
2. Meeting room rental
3. Offices and coworking spaces location

If you would like to arrange a visit or request a quote, please send an email to [info@e-camara.com](mailto:info@e-camara.com).



## Communication tools

### Website

In 2024, it received more than **57,000 visits** from users. The portal provides information of interest to partners from Spanish companies operating in the BeLux and to BeLux companies that want to develop business with Spain.

### Newsletter

A fortnightly digital publication in Spanish and English sent to more than **4,600 subscribers** in **Belgium, Luxembourg and Spain**. It includes references to the activities of the Chamber, its members and economic news and news of general interest for the business community in **BeLux**. The Chamber produces two separate newsletters for the Belgian and Luxembourg markets, respectively.

### Social media

The Chamber's presence on **X and LinkedIn**, with more than **7,500 followers**, allows us to disseminate and share information of interest and activities of our members.

### Yearbook

This **annual publication** includes the main services offered by the Chamber, such as the balance of its activities and the contact information of our members organised by sector of activity. It is distributed among the **Chamber's contact network in printed and digital format**.

### Mailing

The Chamber periodically sends **information of interest** to its member companies by e-mail.

### Tailored events

The Chamber offers its members the possibility to jointly sponsor and organise events. The aim is to offer member companies the opportunity to use the **independent platform of the Chamber**, to promote their company, expand their **customer portfolio** and increase their visibility.

## Communication tools

**+57.000**

Users visited our website in 2024

BELGIUM NEWSLETTER  
**+4.600**  
SUBSCRIBERS

LUXEMBOURG NEWSLETTER  
**+1.350**  
SUBSCRIBERS



**+1.500** FOLLOWERS



**+6.100** FOLLOWERS

## PCARD+

Your access to the city



- Simplified access to our car parks
- Discounts and promotions\*
- Easy access to charging stations
- And even more features...

Ask you free Pcard+ via [www.pcard.be](http://www.pcard.be)

\* See conditions and list of participating car parks on [www.pcard.be](http://www.pcard.be)

# Membership categories

The main objective of the Chamber is the development of trade and investment between **Spanish, Belgian and Luxembourg companies** as well as enabling the dialogue with the European institutions. The Chamber offers its member companies a **wide range of services** including access to a large network of contacts and information of interest on the **Spanish, Belgian and Luxembourg markets** together with the European sector.

The Chamber has **three membership categories with different fees adapted to the needs of all companies**, from start-ups and SMEs to multinationals. Joining the Official Spanish Chamber of Commerce in Belgium and Luxembourg is the best way to establish contacts and explore potential collaborations with them.

The membership to the Chamber has general benefits for all members, with some exclusive benefits for higher categories.

## ORDINARY MEMBERS

## SPONSOR MEMBERS

## BENEFACTOR MEMBERS



## Find out which category best suits your company's needs:

### Networking | Events

	ORDINARY MEMBER	SPONSOR MEMBER	BENEFACTOR MEMBER
Access to an extensive Spanish-Belgian-Luxembourgish-European business and institutional network	●	●	●
Free attendance at networking events, conferences, seminars and other activities	●	●	●
Preferential rates for events with charge	●	●	●
Participation in the Chamber's Working Committees	●	●	●
Attendance to exclusive events organised in collaboration with other institutions and chambers of commerce	●	●	●
Joint organisation of events and promotional initiatives	●	●	●
Priority in event sponsorship	●	●	●
Organisation of a free breakfast-debate or afterwork to present the company	●	●	●
Two free invitations to all events organised under the "Business Circle" tribune and corporate events	●	●	●

### Promotion

Description included in the directory of members (website + Yearbook)	●	●	●
Announcement of new membership in the Newsletter and social media	●	●	●
Publication of information about the company's activity in the "Activity of our members" section of the Newsletter and on social media	●	●	●
Free and exclusive access to the Intranet to promote services and access exclusive promotions	●	●	●
Preferential rates in the communication package	●	●	●
Presence of the logo on the home page of the Chamber's official website and the Newsletter with direct link to the company's website	●	●	●
Presence of the logo in all communications and activities organised by the Chamber	●	●	●
Prominent presence in the directory of members of the Chamber	●	●	●
Exclusive interview with a company representative, distributed through the Chamber's Newsletter, Social Networks and Yearbook	●	●	●
E-mail presentation to all partners to inform them of the new membership	●	●	●
Special announcement in Newsletter and social media to inform our network of contacts about the new partner	●	●	●
High visibility at annual corporate events (New Year's Reception, Gala Dinner, General Assembly of Members)	●	●	●
One free insertion of an advertisement in the Newsletter once a year	●	●	●

### Commercial services

Free listings by sector of activity of companies of potential customers or suppliers free of charge by sector of activity	●	●	●
Legal assistance for the establishment of a company	●	●	●
Publication of job offers in the EmpleoBeLux website	●	●	●
Preselection of employees	●	●	●
Carrying out a commercial action to be agreed	●	●	●



# Activity report 2024

Business circle

Networking events

Conferences, activities  
and other events

Working committees

Trainings

Company of the Year Award

Commercial activities

Assemblies

FEDECOM

# Business circle

The Chamber, through its 'Business Circle' platform, is considered one of the main platforms for **business networking in Brussels and Luxembourg**, thanks to the organisation of events with local personalities and high-level representatives of the European institutions.

The aim of these activities is to promote **dialogue between Spanish companies and local and European decision-making bodies**, participating in the monitoring of EU and Belgian-Luxembourg policies.



# Luncheon-debates in 2024



## Jaume Duch Gillot

Director General of Communication and Spokesperson in the European Parliament

**February 27th**

**"European Elections 2024: challenges and opportunities for the next five years"**



## Ben Smulders

Deputy Director General for State Aid Policy at DG COMP

**March 11th**

**"Reconciling industrial policy and competition policy: Next Gen, IPCEIs and beyond"**

Event sponsored by **Gibson Dunn**



## Michael Hager

Head of Cabinet of Valdis Dombrovskis, Executive Vice-President of the European Commission

**April 11th**

**"Expectations in transatlantic relations for the new institutional cycle"**

Event sponsored by **Qualcomm**



## Maroš Šefčovič

Executive Vice-President of the European Commission for Green Deal, Institutional Relations and Foresight

**April 29th**

**"Making the business case for the green transition: fostering industrial competitiveness in the fight for climate neutrality"**

Event sponsored by **Cepsa**



## Stephanie Riso

Director General for Budget of the European Commission

**September 26th**

**"The new EU multiannual budget: an opportunity to enhance Europe's competitiveness and enabling the green transition"**

Event sponsored by **Iberdrola**



## Federico Torres Muro

Ambassador Permanent Representative of Spain to NATO

**October 24th**

**"NATO's priorities and challenges: Spain's perspective"**

Event sponsored by **Indra**

# Breakfast-debates in 2024

Continuing with the work carried out during the Spanish Presidency, in 2024 the **Chamber** continued to offer **breakfast-debates to follow up the presidencies of the Council of the European Union**, gaining weight in the range of events offered by the **Business Circle**.

Specifically, in the first half of the year, presentations were organised for the **Belgian Presidency** and in the second half of the year for the **Hungarian Presidency**, which gave continuity to the trio of presidencies opened by the Spanish Presidency in the second half of 2023. In addition, the usual line of breakfast-debates with **professionals from the European institutions** continued with several events.



## Miguel Castroviejo



Counsellor for the Environment at the PERMREP of Spain to the EU

**January 25th**

**“The achievements of the Spanish Presidency in the environmental field”**



## Mieke de Regt



Counsellor for Digital Policy and Telecommunications at the PERMREP of Belgium to the EU

**March 26th**

**“The priorities of the Belgian Presidency in the digital field”**

Event sponsored by **ATC Europe**



## Sarah Kuen



Counsellor for Environment and Climate at the PERMREP of Belgium to the EU

**April 18th**

**“The priority climate dossiers of the Belgian Presidency”**



## Barna Kovács & Carlos Aldereguía



Counsellor for Agriculture, Bioeconomy, Research and Innovation and Fisheries Attaché at the PERMREP of Hungary to the EU

**July 16th**

**“The priorities of the Hungarian Presidency in the field of agriculture and fisheries”**



## Jacek Truszczyński

Deputy Head of the Green and Circular Economy Unit of the European Commission

**October 8th**

**“The role of innovation and financing in the Zero Net Emissions Industry Act and the Key Raw Materials Act”**

Event sponsored by **Zabala Innovation**



## Zsuzsa Béres



Energy Attaché at the PERMREP of Hungary to the EU

**October 25th**

**“The priorities of the Hungarian Presidency in the energy sector”**



## Roundtable

**“Energy Poverty in the EU”**

**March 25th**

In collaboration with the benefactor company **APPLiA**

Lina Gálvez (MEP); Anne Weidenbach (member of cabinet of Commissioner for Energy, Kadri Simson, at the European Commission); Dora Biondani (project manager at the EU Energy Poverty Advisory Hub); Bram Soenen (Belgian Ministry of Environment); Bruno Vermoesen (BSH Home Appliances); Michele Consolini (Eurofund); Arianna Vitali (The Coalition for Energy Savings); Davide Sabbadin (European Environmental Bureau) y Paolo Falcioni (APPLiA).

# Collaborations with members and other entities



**Networking cocktail at the Residence of the Ambassador of Belgium in Spain**  
February 1st, Madrid

In collaboration with the Chamber of Commerce of Belgium and Luxembourg in Spain and sponsored by Interparking

**Conference on "Management Commitment to Creativity"**  
March 12th  
In collaboration with IE University



**Corporate visit to the Port of Antwerp**  
April 19th, Antwerp  
In collaboration with the Port of Antwerp

**Information session on public aid for entrepreneurs in Brussels region**  
April 23rd  
In collaboration with 1819 (hub.brussels)



**Afterwork among members**  
May 2nd  
In collaboration with Brigit Art Gallery

**Presentation of the project Migraine Friendly Workplace**  
September 12th  
In collaboration with European Migraine & Headache Alliance



**Conference on "The power of AI in the audiovisual sector"**  
September 25th  
In collaboration with IE University

**Afterwork among members**  
September 26th  
In collaboration with Air Europa



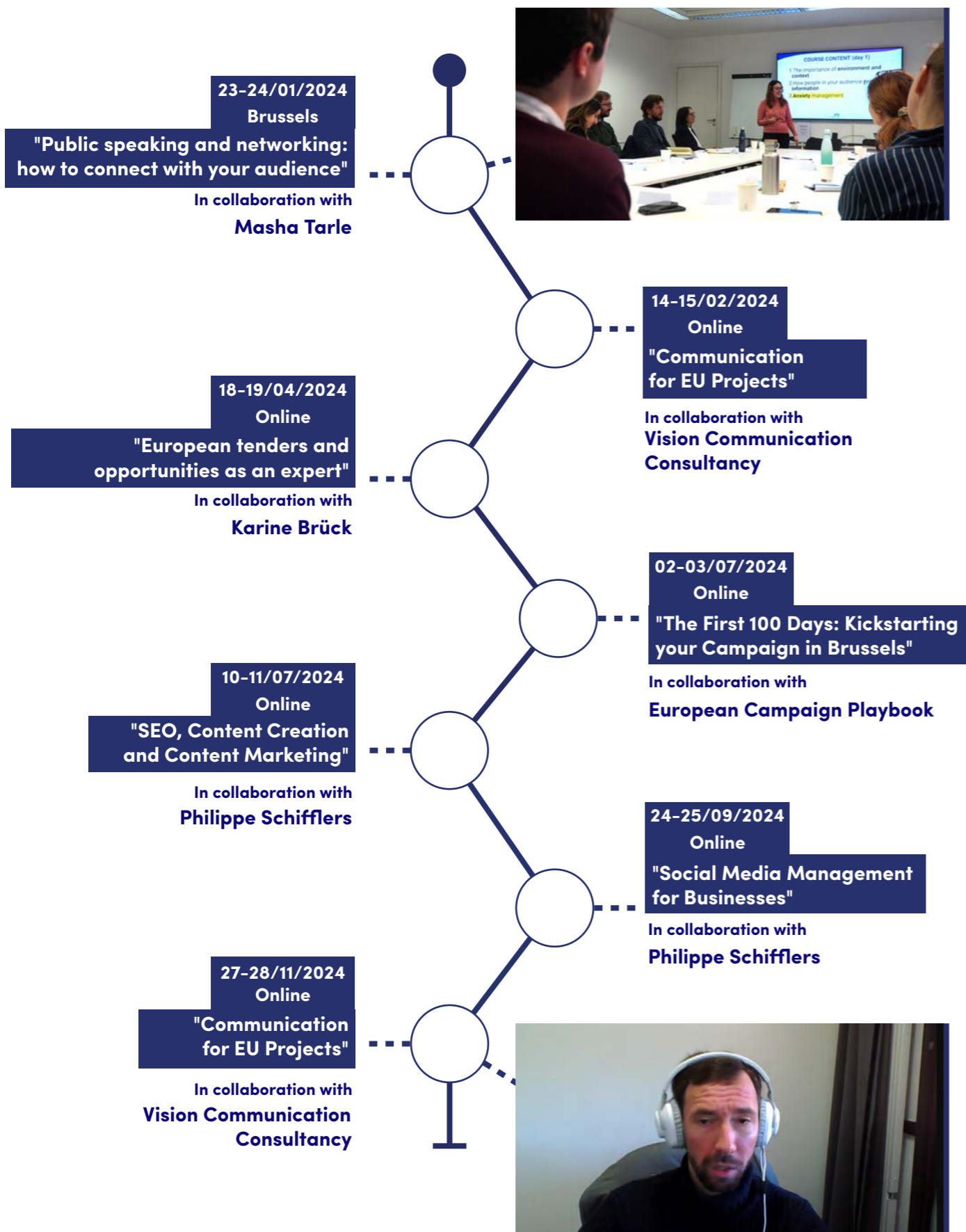
**Celebration of the Spanish National Day**  
October 13th  
In collaboration with the Spanish Embassy in Belgium

**Conference on "Changes that may affect your HR management"**  
October 15th  
In collaboration with SD Worx



**II Padel Tournament**  
November 16th  
In collaboration with Air Europa, GMFC and Rentmore

# Trainings



# Sixth edition of the training programme | November 20-21

## "Public advice strategies and dialogue with European institutions"

On 20 and 21 November, the Official Spanish Chamber of Commerce in Belgium and Luxembourg organised in Brussels the sixth edition of the training 'Public advice strategies and dialogue with European institutions', addressed to Spanish companies and associations.

More than fifteen representatives of companies and national sectorial associations participated in the training, either in person or online, interested in learning first-hand about the tools to establish an effective dialogue with the EU authorities, and motivated to anticipate both the opportunities and risks arising from the political and legislative action that takes place in Brussels.

The training was given by renowned professionals from multinationals, business organisations, leading Spanish bodies and European civil servants.

The first day counted with the participation as trainers of Miguel Ceballos Barón, senior expert of the European Commission; Ignasi Guardans Cambó, European affairs consultant, lawyer and former member of the European Parliament and Ignacio Sánchez Recarte, general secretary of the European Committee of Wine Companies. In addition, the president of the Chamber, Pablo López



Álvarez, was in charge of presenting the course. In the afternoon, Juan Alfonso Herrero Pascual (Mercadona), Ángel Rebollo (ARPA), Amir Campos (Schuman Associates) and Susana Garayoa (Zabala Innovation) intervened.

On the second day, Oriol Escalas Nolla, Spain's Deputy Permanent Representative Ambassador to the EU, and Isabel Riaño, Director General for Competitiveness and Trade of the Council of the European Union, took part. David Luengo (Indra) and Isabel Iglesias (CEOE) also spoke. In addition, participants had the opportunity to visit the European Parliament.



Photo: The students of the 2024 course on their visit to the Permanent Representation of Spain to the EU.



# SPANISH FINANCIAL FORUM

With this working Committee, the Chamber has created in Luxembourg a space for opinion and debate on economic and financial matters where professionals working in companies related to the provision of financial services, members of the Chamber can share experiences, establish collaborations, exchange information on trends in the sector and generate business opportunities.

The main objectives pursued by the Chamber with this working Committee are:

1. To inform about the particularities of the financial services industry in Luxembourg, mainly in professional environments in Spain, and to promote the generation of business opportunities between both countries in this sector.
2. To facilitate networking among the members of the Spanish Financial Forum in Luxembourg (SFF).
3. Act as a link with Latin American markets.
4. Favour the attraction and retention of Spanish talent to Luxembourg.

Participation in the SFF is exclusively for members of the Chamber whose activity is in the financial sector or complementary services. Companies wishing to apply for membership should send an email to:

[secretariageneral@e-camara.com](mailto:secretariageneral@e-camara.com)

07/03/2024

11<sup>th</sup> edition of the SFF Magazine, with a dossier on "Corporate Asset Management"

06/06/2024

12<sup>th</sup> edition of the SFF Magazine, with a dossier on "Global Trends in the Financial Industry"



18/12/2024

14<sup>th</sup> edition of the SFF Magazine, with a dossier on "The role of independents on Boards of Directors"



18/09/2024

13<sup>th</sup> edition of the SFF Magazine, with a dossier on "The future of finance: the contribution of the new generation of professionals"

# Featured Interviews in the SFF Magazine

"Under the leadership of the Secretary of State of Trade at the Ministry of Economy, Trade and Enterprise, the network of economic and trade offices abroad plays a crucial role in internationalisation."



María Ortíz Aguilar

Economic and Trade Advisor to the Spanish Embassies in Belgium and Luxembourg



"Recent studies have shown that family businesses have a high degree of efficiency in innovation management, both in technological aspects and in the renewal and adaptation of processes."

José Luis Blanco

Executive Managing Director of the Instituto de la Empresa Familiar



"Inversis is currently the only Spanish company in Luxembourg offering a 360° solution to support institutional clients interested in developing their international product strategy in a leading financial centre."

Alberto del Cid

CEO at Inversis

"The inspiration for the creation of the LHoFT Foundation came from the need to position Luxembourg as a leading financial centre in the digital age."



Nasir Zubairi

CEO at The LHoFT (Luxembourg House of Financial Technology)

# SFF Learning Solutions



The training offer in Luxembourg focused on the financial sector, called "SFF Learning Solutions", within the framework of the Spanish Financial Forum Working Committee, was further developed in 2024.

24/01/2024

"Securitisation in Luxembourg"

In collaboration with CMS Luxembourg

13/06/2023

"Transfer Pricing for Family Office Structures"

In collaboration with TransFair Pricing Solutions

## SFF Events

25/01/2024

Breakfast-conference on the EU DORA Regulation

In collaboration with Baker McKenzie Luxembourg

01/10/2024

Afterwork on the occasion of the V anniversary of the SFF

In collaboration with EY Luxembourg



04/10/2024

Fintech Discovery: Exponential Spain, in collaboration with The LHoFT

## First edition of the training programme | October 1 - 11

### "Introduction to the Luxembourg financial market"



From 1 to 11 October, the Official Spanish Chamber of Commerce in Belgium and Luxembourg held the first edition of the training programme 'Introduction to the Luxembourg financial market', with the aim of providing participants with the necessary skills to work in the financial sector of the Grand Duchy.

During the two-week course, participants were able to deepen their understanding of the fundamental principles of finance, expanding their previous knowledge as graduates in Economics, Finance, Business Administration, Political Science or Law with a specialisation in economics.

The main added value of the programme lies in the emphasis it places on adapting these contents to the framework of the Luxembourg industry.

To this end, the Chamber put together an agenda of master classes given by professional experts from renowned companies in the sector, such as Anidris Academy, Bank Julius Baer, Caceis, CMS Luxembourg, Deloitte Luxembourg, DLA Piper Luxembourg, EY Luxembourg, Luxembourg for Finance, PwC Luxembourg and The LHoFT.



After the training course, and after having passed the corresponding selection processes, the young graduates were given a six-month paid contract in one of the companies collaborating in the programme, so that they could put into practice what they had learned during the course.

The Chamber is currently immersed in the organisation of the second edition of the programme, which will take place in September 2025.



Photo: The students of the first edition of the course during the event at The LHoFT.

# Events in Luxembourg



**Visit to the Council of State of Luxembourg**  
February 16th

**Concert of the Escolanía de Montserrat choir, at the cathedral of Notre Dame**  
May 25th

In collaboration with the Spanish Embassy in Luxembourg and sponsored by Bankinter and Banque de Luxembourg



**Tasting of Spanish wines**  
June 6th

In collaboration with Vicente & Fils

**Information session on financial assistance for entrepreneurship in Luxembourg**  
June 20th

In collaboration with PlaninLux



**Afterwork to welcome new members**  
November 13th

# Spanish National Day in Luxembourg

10/10/2024

On 10 October, the Chamber participated in the organisation of the Spanish National Day with the prominent presence of three Spanish government ministers, Fernando Grande-Marlaska, Felix Bolaños and Elma Saiz Delgado, and the President of the European Investment Bank, Nadia Calviño.



In collaboration with the Spanish Embassy in Luxembourg

# Solidarity dinner to help the victims in Valencia

04/12/2024



On 4 December, the Chamber, the Spanish Embassy in Luxembourg and several Spanish companies with activities in the Grand Duchy organised a solidarity dinner to raise funds that were donated entirely to Caritas Valencia to support the organisation in its humanitarian work with those affected by the Dana floods of last November.

In collaboration with the Spanish Embassy in Luxembourg, Adepa, Caixabank Wealth Management, Meliá Luxembourg, TM Grupo Inmobiliario y TMF Group

Thanks to the participants, 14.099€ were raised

# Working Committee COMPETENCE SPAIN



The aim of this working group is to deal with specific issues and aspects of competition law and policy that may affect the Chamber’s member companies. The three main objectives of the working committee are:

1. To serve as a meeting and exchange point of knowledge between member companies that are interested in or affected by the European competition policy.
2. To provide a platform to discuss in “neutral territory” between companies, lawyers, consultants, DG Competition officers and the Spanish administration.
3. To reinforce Spain’s leadership as a European benchmark in Competition Law and Policy, both from a public and a private perspective.

For this purpose, the Committee, foresees different lines of activity:

- Organization of work meetings to discuss specific issues and initiatives of DG Competition.
- Holding breakfast-debates or similar events with officers from the DG COMP and national authorities.
- When appropriate, the preparation of opinion statements on specific legislative/regulatory proposals.
- Preparation of documents/guides on competition policy, intended for Spanish companies.

To be part of this Committee, it will be required to be a member of the Chamber and to have a proven experience in the field of competition. The companies interested in joining the Committee can send an email to: [secretariageneral@e-camara.com](mailto:secretariageneral@e-camara.com)

## Breakfast-debate in 2024



**“Recent and future developments in competition: mergers and Digital Markets Act”**

**Brussels**

**14/02/2024**

**Fernando Castillo de la Torre**

Director of the Legal Service of the European Commission



# Commercial activities

In 2024, the Chamber organised a **multi-sectoral trade mission**, in collaboration with the **Madrid Chamber of Commerce**. Under this initiative, **nine producer companies travelled to Belgium and Luxembourg** to promote and sell their products and services in the country. The companies were from the food sector, the project engineering sector, the manufacturing industry and the agricultural sector.

On the other hand, the Chamber collaborated again in a **commercial action** with the **Chamber of Commerce of Cantabria** to look for host companies for **Vocational Training students** to develop their Erasmus+ internships in BeNeLux.

Similarly, collaboration was carried out with the **Teruel Chamber of Commerce** in a reverse mission, through which the Chamber contacted distributors and importers interested in the **province's gastronomic products**.

In addition, an **agenda of meetings** was planned in Belgium, Luxembourg and the Netherlands for a Spanish company **producing plastics** used in the food industry. A second agenda of meetings was also organised in Belgium for a **temporary employment company** interested in posting workers from Spain to companies in the agricultural and wine sector, mainly.

Finally, a Belgian company, **leader in biomechanical innovation in podiatry**, has been **supported in its expansion** in Spain by putting them in contact with both insole manufacturing companies and renowned clinics in the Spanish market.

### Collaborating organisations



### What is a trade mission?



Do you want to introduce your product or service in BeLux?



The Chamber can help you to identify business opportunities to both improve the visibility of your company and make new contacts.



The Chamber will set a meeting agenda with all the companies from BeLux that have shown any interest in your products or services.

# COMPANY of the YEAR AWARD



2024  
COMPANY OF THE  
YEAR AWARD  
4 X EDITION



**sener**



## Sener Aerospace & Defense

The Official Spanish Chamber of Commerce in Belgium and Luxembourg recognised, in the X Edition of its 'Company of the Year' awards, Sener's cutting-edge work in the aerospace and defense sector.

Sener, founded in 1956 as the first Spanish engineering company registered in Spain, today has approximately 4,000 professionals on five continents, offices in 18 countries and production centres for the aerospace and defense market in Spain and Poland. In addition to these markets, Sener has a recognised track record in energy, infrastructures and mobility and data centres.

Since the opening of its Brussels office in 2019, Sener has actively collaborated with around 30 Belgian companies on 18 European defense projects and 12 European space projects. Examples of these successes include Sener's leadership in projects such as HYDEF, for the research of a hypersonic missile interceptor system, or VLEO, for the development of very low orbit satellites.

Andrés Sendagorta, President of Sener, said: 'We are grateful to the Chamber for this award, as well as to all the Spanish authorities in Brussels who have facilitated our local establishment. We will continue to work to be a reference in Europe and we foresee that our representative office in Brussels will grow progressively, reinforcing our collaboration with the Belgian and Luxembourg industry.'

**"We expect our representative office in Brussels to grow progressively"**

**Andrés Sendagorta**

President of Sener

# Assemblies

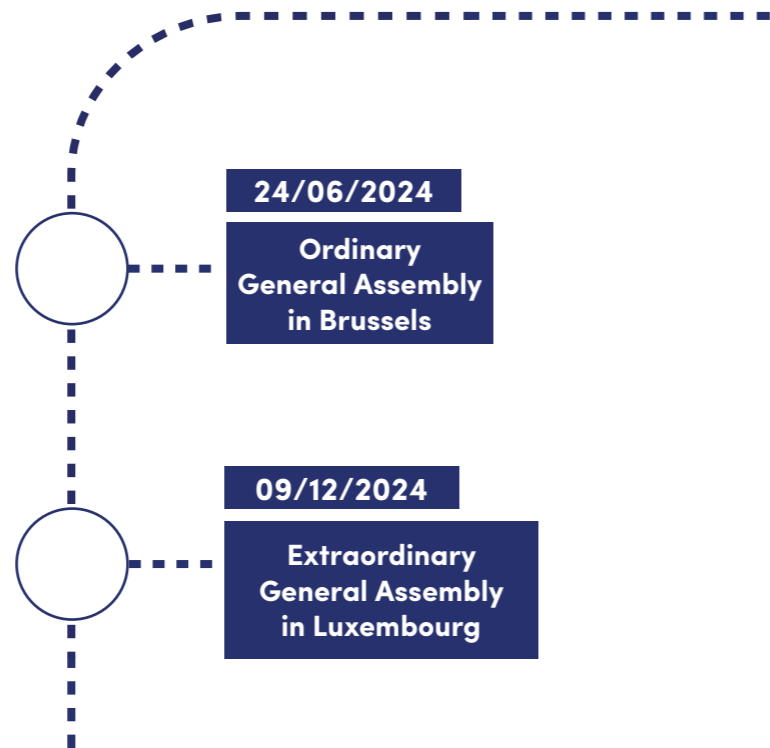
On 24 June, the Official Spanish Chamber of Commerce in Belgium and Luxembourg held its Ordinary General Assembly of 2024 at the headquarters of the Instituto Cervantes in Brussels.

Among the topics discussed, the vice-president Abelardo García reviewed the accounting situation of the Chamber and described the financial situation of the entity as 'very good', with a 7% economic growth in income.

There was also a partial renewal of the Board of Directors, with seven renewals of memberships, including three members of the Management Committee of the Chamber. The event was attended by the Spanish Ambassador to Belgium, Alberto Antón Cortés, and the Economic and Commercial Counsellor, María Ortíz.

At the end of the year, an Extraordinary General Assembly was held in Luxembourg on 9 December. It was attended by a large number of members, as well as the Spanish Ambassador in Luxembourg, José María Rodríguez Coso.

The event served to approve a 'moderately optimistic' budget for 2025, to review the activity carried out in 2024 and to present the cheque for the proceeds of the solidarity dinner of 4 December to Caritas Valencia to help the victims of the Dana floods.



Association of Official Spanish Chambers of Commerce in Europe, Africa, Asia and Oceania

## FEDECOM



The Federation of Official Spanish Chambers of Commerce in Europe, Africa, Asia and Oceania (FEDECOM) is an international non-profit association that currently brings together the 23 Official Spanish Chambers of Commerce, recognised by the Ministry of Economy, Trade and Enterprise and established in Europe, Africa, Asia and Oceania.

FEDECOM's main mission consists of defending the general interests of its members, identifying business opportunities, standardising services, liaising with the supervisory authority and the Spanish Chamber of Commerce, as well as relations with international institutions.

## CAMACOES Assembly 2024

On 8 and 9 July, the Chamber took part in the meeting of the 44 Official Spanish Chambers of Commerce abroad in Madrid, within the framework of the CAMACOES Assembly, which also brought together the Chambers belonging to FEDECOM and FECECA (Federation of Official Chambers of Commerce in America).

During these working days, conferences were held such as the 'Presentation of the Network Projects and Services (Barometers)', the round table entitled 'How to reinforce synergies and interaction in the Cameral Network' or a presentation on associations and organisations of the Chambers of Commerce.

The Secretary of State for Trade, Amparo López Senovilla, highlighted the role of CAMACOES as a support network for internationalisation and its work as a 'fundamental instrument' for accompanying companies and promoting their growth.



# PROJECTS

Empleo BeLux

emprende  
**B-LUX**

Erasmus Jóvenes  
**Emprendedores**

Talento Joven Movilidad

**WLead**

**START**

**SOFT  
IMPROVE**

**DG  
VET**

**TEX4.0**  
Enabling Industry 4.0 Skills in Textile SMEs

**W4TEX**  
women textile

**EMPLEO  
BELUX**

**Empleo BeLux**

The Chamber manages, since 2014, the employment website EmpleoBeLux which aims to facilitate the labour and social integration of Spaniards living in Belgium and Luxembourg.

Through the website **Empleobelux.com**, the Chamber makes this available to users:

1. General information on the Belgian and Luxembourg employment market, as well as practical aspects of living and integrating in both countries.
2. Job offers in Belgium and Luxembourg and information on employment opportunities in the European Institutions.
3. Registration for applicants and weekly newsletter with job-search oriented information.
4. News, activities and events of interest.
5. Publication of job vacancies and information on recruitment aids for companies.
6. Personnel pre-selection service aimed at companies.
7. Information on entrepreneurship and business creation.

Published offers  
**+710**

Website visits  
**+115  
DAILY**

Newsletters  
**+50  
YEARLY**

Website visits  
**+42.000**

Registered candidates  
**+1140**

Registered businesses  
**+120**

# EMPRENDE BELUX



The aim of the EmprendeBelux programme is to support Spaniards in Belgium and Luxembourg on the long road to entrepreneurship and to accompany them in the consolidation of their business. The programme offers a set of tools aimed at guaranteeing the success of your project. Whether you have already started your activity as a freelancer or entrepreneur or you are still in the design phase, at EmprendeBelux we want to get to know your project, help you to boost your business and connect you with other entrepreneurs in Belgium and Luxembourg. The cost of participation in the programme varies depending on the legal status of your company and the stage of development of the project.

**Newly established companies and future entrepreneurs (a company in implementation phase or established in the last 24 months):**

**175€ + VAT**

**Companies established more than 24 months ago:**

**420€ + VAT**

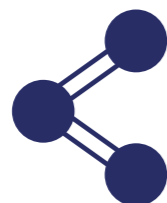
**Freelancers**

**175€**



### COUNSELING

Support in the design of tailor-made plans for projects.



### CONTACT NETWORK

Access to an extensive network of contacts and to expand the chances of success.



### TRAINING

Promoting professional development through training activities.



### PROMOTION

Dissemination of the activity through multiple communication channels.



## Do you know the EmprendeBeLux Guide?

The EmprendeBeLux Guide offers to future entrepreneurs and freelancers clear and practical information on the different stages involved in starting an activity in a foreign country. This publication is free and available in digital format. This is the first guide in Spanish to start a company in both countries. In October 2024, the fifth edition of the guide in Luxembourg was published.

### CONTENTS

1. Main differences between starting a business in Belgium, Luxembourg or in Spain.
2. Previous steps to the establishment.
3. Steps to follow to set up as a company.
4. Entrepreneurship support in Belgium and Luxembourg.
5. Directory of companies and institutions related to entrepreneurship.

Download the **EMPRENDEBELUX** Guide for free in our website

[www.emprendebelux.com](http://www.emprendebelux.com)





## ERASMUS FOR YOUNG ENTREPRENEURS

# Erasmus for Young Entrepreneurs

In 2024, the Chamber has promoted transnational exchanges of entrepreneurs in Belgium and Luxembourg through the Erasmus for Young Entrepreneurs programme.

**For the last 10 years, the Chamber has been the local contact point for this European Union initiative which offers:**

1. The possibility for young entrepreneurs with less than 3 years of experience to validate and develop their business plan.
2. The possibility of having a partner to explore new markets for experienced entrepreneurs.

For more information, please contact us

[erasmus4youngentrepreneurs@e-camara.com](mailto:erasmus4youngentrepreneurs@e-camara.com)

EXCHANGES  
31

HOST ENTREPRENEURS  
22

NEW ENTREPRENEURS  
9

### EVENTS

**Kaunas**  
10-11/04/2024

32<sup>nd</sup> edition of the Erasmus for Young Entrepreneurs Network Meeting, which celebrated the 15<sup>th</sup> anniversary of the programme



**Brussels**  
23/04/2024

Informative session on public aid for entrepreneurs in the Brussels region

**Antwerp**  
17/10/2024

Workshop "Test your business idea with Erasmus for Young Entrepreneurs", with students from the University of Antwerp

**Brussels**  
15-16/10/2024

33<sup>rd</sup> edition of the Erasmus for Young Entrepreneurs Network Meeting

## PROGRAMMES

## STORY OF THE YEAR

On 10 and 11 April, the Chamber participated in the 32<sup>nd</sup> Network Meeting of the Erasmus for Young Entrepreneurs (EYE) programme held in Kaunas, Lithuania.

During this two-day event, the intermediary organisations, the programme's support office and the European Commission had the opportunity to meet and assess the impact of this European initiative, which will be 15 years old in 2024.

The first day started with the welcoming remarks of Aušrinė Armonaitė, Minister of Economy and Innovation of Lithuania, followed by the intervention of representatives of DG GROW (Directorate General for Internal Market, Industry, Entrepreneurship and SMEs) and EISMEA (European Innovation Council and SMEs Executive Agency) of the European Commission.

During the two days, conferences, workshops and round tables were organised for the participants, concluding with the Innovation Awards Ceremony and the 15<sup>th</sup> birthday celebration.

Since EYE started in 2009, more than 12,000 exchanges have been created in over 40 countries with 97% of participants considering their experience successful.

The Chamber celebrated the 15<sup>th</sup> anniversary of the programme in Kaunas (Lithuania)

OUR FEATURED



## YOUNG TALENT MOBILITY PROGRAMME



### PROGRAMME

### OVERVIEW

Since 2020, the Chamber collaborates in the management of the Young Talent Mobility Programme (known until 2024 as PICE), an initiative of the Spanish Chamber of Commerce co-financed by the European Social Fund and framed within the Youth Guarantee System of the Spanish Ministry of Labour and Social Economy. The Mobility Plan is implemented by the network of Spanish Chambers and its main objective is to provide personal and professional development opportunities to young people participating in the programme and, at the same time, to boost the productivity of member companies.

#### Attracting young and qualified talent according to your needs

The Young Talent Mobility programme gives companies in Belgium and Luxembourg the possibility to employ for periods of 3 or 6 months qualified and enthusiastic young people who are looking to make the most of their experience abroad.

The flexibility of the programme makes it possible to adjust the search for talent to the specific requirements or needs of each company at any given time. The Chamber takes care of the initial management of each vacancy so that participating companies receive a pre-selection of candidates that fit their needs or requirements.

The mobility plan covers the full amount of the grant received by the beneficiaries, although the host company can, on a completely voluntary basis, complement it.

#### Improving employability and experience abroad

Through the mobility programme, beneficiaries have the opportunity to improve their employability by accessing a first work experience abroad. The diversity of profiles required by companies and the number of European countries included in the scheme allow finding opportunities adapted to each profile. In addition, through the mobility scheme, young people have the possibility to live an experience abroad while combining personal development with professional growth in the various participating companies.

#### HOW TO PARTICIPATE?

1. Contact the Chamber: info@e-camara.com
2. Fill in the company registration and vacancy forms
3. Choose candidate from a pre-selection
4. Complete the necessary administrative formalities

# Experts in solving the most complex challenges

Our passion for technological challenges inspires us to develop the most advanced and innovative solutions in different markets, with the aim of contributing to the progress of society in a sustainable environment, through our commitment to customers, people and the environment.

With a global presence in 18 countries and a diverse team of 4,000 professionals, we lead the development of disruptive projects shaping the future across our core business areas: Aerospace and Defence, Mobility, Advanced Facilities, Energy, Renewables Investment, Digital, and Diagnostics.

www.group.sener



## PROGRAMMES

## WLead



WLead was a project, co-funded by the Erasmus+ programme of the European Union, that aimed to promote the acquisition and improvement of professional and personal skills and competences of entrepreneurial, employed and unemployed women seeking to boost their professional career.

The WLead project developed, over its 2-year duration, a package of training tools for women that is accessible through an e-learning platform to respond to the special needs most in demand by women today.

In addition, three face-to-face training seminars were held in Belgium, Luxembourg and Spain to put into practice the tools previously developed and several mentoring meetings will be held between the participating women.

Finally, several events took place at national level to disseminate the results of this initiative that provided women with the skills they need to be professional leaders in a new digital era.



For more information, please contact us  
[wlead@e-camara.com](mailto:wlead@e-camara.com)

Visit the learning platform of WLead  
[www.womenlead.eu](http://www.womenlead.eu)

## START



The START project is a 24-month project, co-funded by the Erasmus+ programme, that ended in 2024 and aimed to promote the internationalisation of SMEs in the retail sector, stimulating economic growth and development, thus fulfilling one of the EU's most important priorities.

The project provided retailers and young or unemployed people interested in this sector with experience and tools to improve their internationalisation skills in order to gain the necessary knowledge and be able to develop a competitive internationalisation strategy to expand their business to international markets.

Within the specific objectives it has been achieved:

- Define the professional profile of the "internationalisation manager" for SMEs in the retail sector to support continuous training in this field.
- To train entrepreneurs, start-ups and decision-makers in the sector.
- To train young people and the unemployed who are looking for new job opportunities in this sector.
- To increase the digital literacy of learners to facilitate the distance learning process and to optimise the use of e-commerce technologies to further develop small businesses in the retail sector.

**FINAL EVENT**  
**Brussels**  
**30/01/2024**

### "Enhancing Internationalization Skills for SMEs in the Retail Sector"

For more information, please contact us  
[start@e-camara.com](mailto:start@e-camara.com)

Visit the learning platform of START  
[www.project-start.eu](http://www.project-start.eu)

## SOFTIMPROVE



The aim of SoftImprove is to provide professionals and entrepreneurs with the knowledge and practice of the soft skills needed to increase their employability, improve their career prospects and increase their chances of success.

This Erasmus+ co-funded project will implement a series of activities over 36 months. The specific objectives of the project are:

- Characterise soft skills, decipher the role they play in enhancing employability, career and business and assess the needs and expectations of professionals and entrepreneurs for soft skills training.
- Specify and develop a methodology combining face-to-face and distance learning for soft skills training, together with tools to monitor and evaluate trainees' progress.
- Develop a face-to-face soft skills training course combining theoretical knowledge, coaching, gamification and peer feedback, to be pilot tested, evaluated and refined.
- Build a distance learning platform on soft skills composed of specifically adapted and developed content.
- Promote a generation of professionals and entrepreneurs who are knowledgeable and well-trained in soft skills, with the message that soft skills are as important as hard skills, and can be improved through learning.



For more information, please contact us

[softimprove@e-camara.com](mailto:softimprove@e-camara.com)

Visit the learning platform of SoftImprove

[www.softimprove.academy](http://www.softimprove.academy)

## DG VET



DG VET is a European project co-funded by the Erasmus+ programme and managed by the Official Spanish Chamber of Commerce in Belgium and Luxembourg.

It is a 24-month project that aims to develop an innovative methodology and training material, accompanied by an e-learning platform to support the development of digital and green skills required by the labour market, especially in agriculture. In this way it aims to improve the employability of economically inactive and uneducated rural youth, with an emphasis on women between 18 and 30 years old.

DG VET partners recognise the important contribution of the digital and green economy (DaGE) sectors in creating employment opportunities for young people living in rural areas. In addition, it will seek to address:

- The phenomenon of the digital gap: the difference between those living in rural areas and those living in cities in terms of access to ICT.
- The skills mismatch between job requirements and the skills of workers in the DaGE sectors.
- The lack of political commitment in promoting and implementing youth-friendly VET programmes.



**FINAL EVENT**  
Brussels  
31/01/2024  
"A more digital and Green European employability, improving Green digital skills"



For more information, please contact us

[dgvet@e-camara.com](mailto:dgvet@e-camara.com)

Visit the learning platform of DG VET

[www.dg-vet.eu](http://www.dg-vet.eu)

## TEX4.0



The aim of TEX4.0 is to provide vocational students, textile workers and young people who are neither currently studying nor working with training and skills in Industry 4.0 technologies related to the sector, so that they can keep up to date with technological developments and increase their employment opportunities.

This Erasmus+ co-funded project will implement a series of activities over 24 months. The specific objectives of the project are:

- Develop a curriculum based on the needs of vocational teachers and students in the new technologies sector.
- To equip vocational teachers with the necessary tools to support and encourage the acquisition of digital skills in their students.
- To offer vocational students an innovative training package in Industry 4.0 and related skills.
- Produce attractive training tools to make the textile sector more attractive to young people.

### EVENTS

Launch meeting of the TEX4.0 project in Dresden (Germany)

01/02/2024



01/03/2024

Launch of the first newsletter of TEX4.0

For more information, please contact us

[texproject@e-camara.com](mailto:texproject@e-camara.com)

## W4TEX



W4TEX, Strengthening Women's Representation in Senior Textile Positions, is a comprehensive project designed to empower women in the textile sector by offering them a specialised training plan focused on managerial skills.

This initiative, co-funded by the European Union's Erasmus+ programme, aims to achieve the following objectives in its 30-month duration:

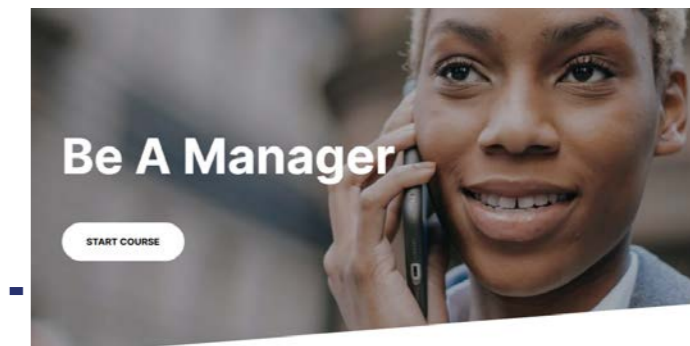
- To provide women and teachers with training materials focusing on management skills for the textile sector.
- To provide a toolkit on green practices for a sustainable textile ecosystem.
- Organise Ideathons to prepare women for their integration into the labour market.
- Motivate and empower women to take up managerial positions in the textile sector.
- Create channels of communication between women, SME managers and textile company owners.
- Offer women transnational training and connect them at European level.

The programme targets women in the project partner countries (Belgium, Spain, Greece, Sweden, Italy and Ukraine), but also women displaced by armed conflict, trainers, policy makers, employment agencies and companies.

### EVENTS

Launch of the W4TEX platform with the course "Be A Manager"

11/2024



For more information, please contact us

[w4tex@e-camara.com](mailto:w4tex@e-camara.com)

Visit the learning platform of W4TEX

[www.w4tex-project.eu](http://www.w4tex-project.eu)



# Members of the Chamber

Interviews with members  
Benefactor and Sponsor  
members  
Member Directory

# Interviews with members

"APPLiA - Home Appliance Europe is a Brussels-based trade association that provides a single, agreed voice for the home appliance industry in Europe, promoting sustainable lifestyles."



**Paolo Falcioni**

Director general at APPLiA, Home Appliance Europe



"At Schuttelaar & Partners, we excel in our ability to deliver customised solutions to our clients in three key areas: agri-food, health sciences and sustainable energy, with a diverse team of over 100 specialists."

**Lorena van de Kolk**

Managing partner at Schuttelaar & Partners

"In the Bosque FeVi restaurant, with its gastronomic Mediterranean cuisine, we offer mainly tasting menus to discover the essence of Spanish cuisine, while in FeVi Gaudium we offer a wide variety of tapas."



**Fernando Andreu and Violant Tarrach**

Owners of the Bosque FeVi and FeVi Gaudium restaurants



"Leon Steffes S.A. is a third generation family business whose main activity is the trade of building materials and since 2024 we are part of the Porcelanosa partner programme with an exhibition showroom."

**Charles Steffes**

Member of the Board of Porcelanosa Luxembourg (Ets Leon Steffes SA)



"Abertis is one of the leading international operators in the management of high-capacity, high-quality motorways, with nearly 8,000 kilometres of roads in fifteen countries in Europe, America and Asia."

**Georgina Flamme**

Director of Institutional Relations, Communication and Sustainability at Abertis

"Schuman Associates is the leading EU public affairs and funding consultancy based in Brussels, with a track record in securing EU and public sector funding since its inception in 1989."



**Ruth Estrada**

Partner at Schuman Associates



"SD Worx provides end-to-end HR and payroll solutions to more than 90,000 customers worldwide. With local expertise in 26 European countries, we process 5.7 million payrolls per month."

**Isabelle Kerdranvat**

Global Sales Consultant at SD Worx

"Fiscalift's strengths are its proximity, friendliness and know-how, which is characterised by the experience of its 40 years of professional experience in the accounting and taxation field."



**Florentino Quidiello**

Specialised accountant and Fiscalift manager

# Interviews of members



"At TransFair Pricing Solutions (TFPS), we specialise in offering customised transfer pricing and valuation solutions to financial and corporate entities by providing specialised services of high quality."



**Vanessa Ramos Ferrín**  
Managing Partner at TransFair Pricing Solutions



"PwC Legal is an independent law firm registered with the Luxembourg Bar, member of the PwC network. It is a full-service business law firm, with the guarantee of high quality standards."

**Jean-Baptiste Joannard-Lardant**  
Senior Associate at PwC Legal Luxembourg



"The mission of OEL Fund Services is to identify potential markets and create opportunities aligned with the investment strategies of our clients, both private and institutional, for the development and growth of RAIF Funds."

**Manuel Arteaga**  
Managing Director at OEL Fund Services

"At EY, we are the most globally connected of the Big Four. With more than 280 professionals specialising in real estate in Luxembourg, we combine our global and local capabilities to meet the needs of our clients' businesses."



**Luis Chamorro**  
Partner at EY Luxembourg

# Interviews of SFF members

"My company, Market LAB Luxembourg Sarl, is the promoter and founder of fLAB FUNDS Sicav, a UCITS vehicle with 2 compartments: fLAB Core and fLAB Satellite, both with a track-record of 15 years with a great performance/risk ratio."



**Oscar Alvarez**  
President at fLAB FUNDS



"At Kuts & Co we are a multi-family office and corporate service provider; this combination allows us to provide synergies when offering full service packages to families and funds."

**Jose Lopez**  
Partner at Kuts & Co



"IMEureka democratizes insurance capacity and technology to the small or medium-sized broker. All the data generated in each transaction is transformed into value thanks to our AI."

**Pablo Collado**  
CEO and co-founder of IMEureka

"As one of the 10 largest asset managers in Europe, Nordea Asset Management has a global business model and manages asset classes across the entire investment spectrum, with the aim of being accessible and offering the best service."



**Aitor Cabellos**  
Sales Manager at Nordea Asset Management



# Interviews of SFF members

"Banca March is the head of one of Spain's leading financial groups and the only one that is 100% family-owned. We specialise in wealth management and advisory services, with a special focus on family businesses and the business-entrepreneur binomial."



José Luis Acea

CEO at Banca March



"KPMG Luxembourg offers audit, tax and consulting services, with a focus on the financial and corporate sector. We advise local and international companies on tax and regulatory issues."

Xavier Martínez

Tax Partner at KPMG Luxembourg

"Since Brigit Art Gallery opened its doors in 2018, I have enjoyed a double vision as an artist and gallery owner, which has been enormously enriching for me. There is a lot of Spanish talent to show which is a source of pride for the Spanish community living in Brussels."



Carolina Toyos

Owner of Brigit Art Gallery



"I am committed to creating accessories and products with less environmental impact through 3D printing with sustainable materials; I believe that designers must take responsibility for what we bring into the world."

Florencia Ferraro

Founder of Ferra Studio

## Interviews with entrepreneurs

# Interviews Women who Inspire: Finance

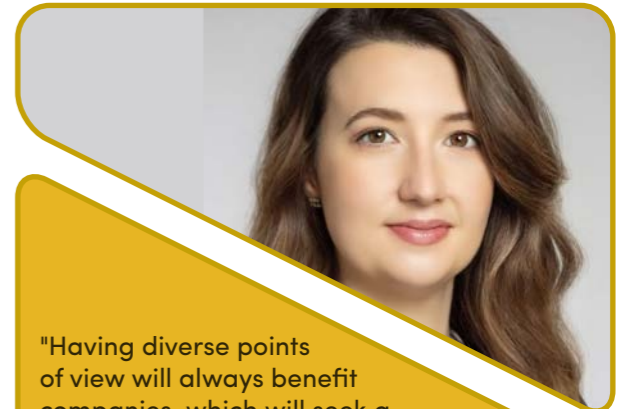


In 2024, the Chamber launched a new line of work aimed at increasing the visibility of women professionals in the Luxembourg financial industry through the Women who Inspire: Finance section of the SFF Magazine.

Through this space, the Chamber published last year three interviews with women working in the Grand Duchy who offered their perspectives on gender equality and diversity in this sector.

Watch these interviews on the Chamber's YouTube channel:

"Official Spanish Chamber of Commerce in Belgium and Luxembourg"



"Having diverse points of view will always benefit companies, which will seek a diverse customer base. Studies show that companies with greater diversity in their management teams are more profitable."

Verónica Martínez

"In my generation, I believe that there are already more women reaching management positions and that thanks to the proliferation of diversity initiatives we are moving towards the normalisation of the presence of women in senior positions."



Rocío García-Santiuste



"I believe that diversity greatly improves decision-making in companies. This is very positive and at the same time it can attract clients and other companies that advocate this diversity and generate synergies."

Berta Blasco

# Members

# BENEFACTORS AND SPONSORS



# Directory

## ADVERTISING AND MARKETING AGENCIES

### COMMUNICATION PACKAGE

Country: Belgium  
Address: 412 Av. Tervuren, 1150 Brussels  
Tel.: +32 2 880 37 34, +32 477 098 788  
Web: www.communicationpackage.com

### QUALITY MEDIA PRODUCCIONES

Country: Spain  
Address: Miguel Yuste 32, 28037 Madrid  
Tel.: +34 620 95 23 87  
Web: www.qualityproducciones.es

## FOOD, BEVERAGES AND TOBACCO

### ALMA DE AOVE

Country: Spain  
Address: Calle de Castelló, 14 - 28001 Madrid  
Tel.: +34 658 602 600  
Web: www.almaove.com

### BRITISH AMERICAN TOBACCO

Country: Belgium  
Address: Rue d'Arlon 80 - 1040 Brussels  
Tel.: +32 2 627 88 80  
Web: www.bat.com



### JOKA BVBA – THE CORTADOR ACADEMY

Country: Belgium  
Address: Monnikenwerve, 194 - 8000 Brugge  
Tel.: +32 470 19 02 02  
Web: www.jokajoka.com

### LA BUENA TIERRA

Country: Belgium  
Address: Sint-Jansbergstraat, 8 - 3545 Halen  
Tel.: +32 1 331 37 11  
Web: www.labuenatierra.be




## Bové Montero y Asociados

Auditores · Consultores · Asesores jurídico-tributarios

BARCELONA MADRID PALMA DE MALLORCA SEVILLA VALENCIA

Asesoramiento profesional adaptado al tamaño, necesidad e idioma de cada cliente

No importa de dónde venga y hacia dónde vaya.

No importa en qué idioma se exprese.

No importa de qué tamaño sea su empresa.

Entendemos su negocio, hablamos su idioma.

40 años de experiencia nos avalan.

[www.bovemontero.com](http://www.bovemontero.com)



# Members and Entrepreneurs

## LA BUENA VIDA CVBA

Country: Belgium  
Address: Lichtstraat Verlipark Unit, B.1.26 - 2400 Mol  
Tel.: +32 1 445 13 03  
Web: www.labuenavida.be

## LA CONQUISTA

Country: Belgium  
Address: Boomssesteenweg 90, 2630, Aartselaar  
Tel.: +32 3 887 57 47  
Web: www.laconquista.be

## MEDITERRANEA FOOD & EVENTS

Country: Belgium  
Address: Chaussée de Louvain, 446 - 1030 Brussels  
Tel.: +32 2 230 62 74  
Web: www.mediterranea-traiteur.be

## MERCADONA SA

Country: Belgium  
Address: Avenue des Nerviens 85, 3<sup>rd</sup> floor - 1040 Brussels  
Tel.: +34 900 500 103  
Web: www.mercadona.es

## PHILIP MORRIS SPAIN S.L.

Country: Spain  
Address: Calle José Lazaro Galdiano, 6 - 28036 Madrid  
Tel.: +34 911 734 152  
Web: www.pmi.com

## SOTOFERMOSE

Country: Spain  
Address: Lagasca 80 - 28001 Madrid  
Tel.: +32 490 457 184  
Web: www.sotofermoso.es

## TOQUE IBÉRICO

Country: Belgium  
Address: Rue de Trêves 49/51 - 1040 Brussels  
Tel.: +32 497 429 364  
Web: www.toqueiberico.be

## VALL COMPANYS GRUPO

Country: Spain  
Address: Pol. Industrial El Segre, parcela 41 - 25191 Lleida  
Tel.: +34 973 20 55 31  
Web: www.vallcompanys.es

## VICENTE ET FILS SARL

Country: Luxembourg  
Address: 70, Rue de l'École - 8353 Garnich  
Tel.: +352 264 306 50  
Web: www.vinosvicente.lu

## VINESPA

Country: Belgium  
Address: Rue Verheyden, 86 - 1070 Brussels  
Tel.: +32 2 523 79 58  
Web: www.vinespa.be

## INSURANCE COMPANIES

### BUREAU DE COURTAGE B. MOUYARD

Country: Belgium  
Address: Chaussée de Namur n° 3 - 5140 Tongrinne (Sombrefe)  
Tel.: +32 718 898 71

### CASIOPEA RE S.A.

Country: Luxembourg  
Address: 23, Avenue Monterey - 2163 Luxembourg  
Tel.: +352 297 952

### GROUP S

Country: Belgium  
Address: Avenue Fonsny, 40 - 1060 Brussels  
Tel.: +32 2 507 18 80  
Web: www.groups.be

### IMEUREKA

Country: Spain  
Address: Paseo de la Castellana, 200 - 28046 Madrid  
Tel.: +34 699 59 44 15  
Web: www.imeureka.com

### LALUX ASSURANCES

Country: Luxembourg  
Address: Rue Jean Fischbach 9 - 3372 Leudelange  
Tel.: +352 476 11  
Web: www.lalux.lu

### LOMBARD INTERNATIONAL ASSURANCE

Country: Luxembourg  
Address: Rue Lou Hemmer 4 - 1748 Luxembourg  
Tel.: +352 346 19 11  
Web: www.lombardinternational.com

### MAPFRE RE, SUCCURSALE DE BRUXELLES

Country: Belgium  
Address: Rue de Trêves, 45 - 1040 Brussels  
Tel.: +32 2 237 10 11  
Web: www.mapfre.com

### PARTENA BUSINESS & EXPATS

Country: Belgium  
Address: Boulevard Louis Mettewie, 74-76 - 1080, Brussels  
Tel.: +32 475 785 799  
Web: katrien.vandenwaeyenbergh@bepartena.be

### PARTENA BUSINESS SOLUTION SHARED SERVICES

Country: Belgium  
Address: Rue Chartreux, 45 - 1000, Brussels  
Tel.: +32 2 444 47 00  
Web: www.partena-professional.be

## SOGLIFE S.A.

Country: Luxembourg  
Address: Place de la Gare 28-32, - 1616 Luxembourg  
Tel.: +352 24 13 73 1  
Web: www.sogelife.com

## WEALINS

Country: Luxembourg  
Address: 12 Rue Léon Laval - 3372 Leudelange  
Tel.: +352 43 74 35 200  
Web: www.wealins.com

## LEGAL AND/OR TAX ADVISORS - NOTARY SERVICES

### ACTIVADOS INTERNACIONAL

Country: Netherlands  
Address: Dorpsstraat 99, 1431 Aalsmeer  
Tel.: +31 850 205 200  
Web: www.activados.nl

### AFIENS LEGAL

Country: Spain  
Address: Maldonado 4, Bajo D - 28006 Madrid  
Tel.: +34 911 920 063  
Web: www.afiens.com

### AFYSE Spain ASESORES

Country: Spain  
Address: C/ Isla Formentera, 29-2B - 03710 Calpe  
Tel.: +34 967 490 376  
Web: www.afyse.es

### ALLEN & OVERY

Country: Luxembourg  
Address: 5 Avenue J.F. Kennedy - 1855 Luxembourg  
Tel.: +352 44 44 55 1  
Web: www.allenoverly.com/en-gb/global/global\_coverage/europe/luxembourg

### ALTIUS CVBA

Country: Belgium  
Address: Avenue du Port, 86C, B414 Tour & Taxis - Royal Dépôt - 1000 Brussels  
Tel.: +32 2 426 14 14  
Web: www.altius.com

### AMÉLIE DOPCHIE

Country: Belgium  
Address: Avenue Louise 235 - 1050 Brussels  
Tel.: +32 2 543 02 00  
Web: www.vancutsem.be/fr/avocat/amelie-dopchie/

### APEX FUND SERVICES

Country: Luxembourg  
Address: 3 Rue Gabriel Lippmann, 5365 Munsbach  
Tel.: +352 44 09 29  
Web: www.theapexgroup.com

**ARENDE & MEDERNACH**

Country: Luxembourg  
 Address: 41A, Avenue J.F. Kennedy – 2082 Luxembourg  
 Tel.: +352 407 878 973  
 Web: www.arendt.com

**BAKER MCKENZIE LUXEMBOURG**

Country: Luxembourg  
 Address: 10-12 Boulevard F.D. Roosevelt – 2450 Luxembourg  
 Tel.: +352 26 18 44 1  
 Web: www.bakermckenzie.com/en/locations/emea/luxembourg

**BOVÉ MONTERO & CÍA**

Country: Spain  
 Address: Calle Mariano Cubí, 7 – 08006 Barcelona  
 Tel.: +34 932 18 07 08  
 Web: www.bovemontero.com

**BROUXEL & RABIA**

Country: Luxembourg  
 Address: 8-10 Avenue Marie-Thérèse – 2132 Luxembourg  
 Tel.: +352 262 031 29  
 Web: www.brouxelrabia.lu

**BUREN AVOCATS SARL**

Country: Luxembourg  
 Address: 98, Boulevard de la Pétrusse – 2320 Luxembourg  
 Tel.: +352 26 44 09 19  
 Web: www.burenlegal.com

**CECA MAGAN ABOGADOS**

Country: Spain  
 Address: Calle Velázquez 150 – 28002 Madrid  
 Web: www.cecamagan.com

**CHARLES RUSSEL SPEECHLYS SCS**

Country: Luxembourg  
 Address: 2 rue Jean Monnet – 2180 Luxembourg  
 Tel.: +352 26 48 68 00  
 Web: www.charlesrussellspeechlys.com

**CLAYTON & SEGURA**

Country: Belgium  
 Address: Av. des Gaulois 9 – 1040 Brussels  
 Tel.: +32 27 692 382  
 Web: www.claytonsegura.com

**CLIFFORD CHANCE**

Country: Luxembourg  
 Address: 10, Boulevard G.D. Charlotte – 1147 Luxembourg  
 Tel.: +352 485 050 1  
 Web: www.cliffordchance.com

**CMS LUXEMBOURG**

Country: Luxembourg  
 Address: 5, rue Charles Darwin – 1433 Luxembourg  
 Tel.: +352 26 27 53 1  
 Web: www.cms.law/en/lux

**COOLEY LLP**

Country: Belgium  
 Address: Bld Bischoffsheim 15 – 1000 Brussels  
 Tel.: +32 4 702 28 511  
 Web: www.cooley.com

**CUATRECASAS**

Country: Spain  
 Address: Avenida Diagonal 191 – 08018 Barcelona  
 Tel.: +34 932 905 500  
 Web: www.cuatrecasas.com

**DLA PIPER**

Country: Luxembourg  
 Address: 58, Blvd Grande-Duchesse Charlotte – 1330 Luxembourg  
 Tel.: +352 262 90 41  
 Web: www.dlapiper.com/en/us/locations/luxembourg

**E2M SARL**

Country: Luxembourg  
 Address: 2 rue du Fort Rheinsheim – L-2419 Luxembourg  
 Tel.: +352 28 55 36-1  
 Web: www.e2m.lu

**ERYV SPRL**

Country: Belgium  
 Address: Avenue du Martin-Pêcheur 15, Bte 24 – 1170 Brussels  
 Tel.: +32 2 675 42 40  
 Web: www.eryv.be

**EVERSHEDS SUTHERLAND**

Country: Luxembourg  
 Address: 33 Rue Sainte-Zithe – 2763 Luxembourg  
 Tel.: +352 661 743 028  
 Web: www.eversheds-sutherland.com

**FIDELIUM**

Country: Belgium  
 Address: Bd. Saint Michel, 65/6 – 1040 Brussels  
 Tel.: +32 27 70 06 19  
 Web: www.fidelium.eu

**FISCALIFT SRL**

Country: Belgium  
 Address: Rue D'Arenberg, 1C – 1000 Brussels  
 Tel.: +32 2 201 26 26  
 Web: www.fiscalift.be

**FRESHFIELDS LLP**

Country: Belgium  
 Address: Bastion Tower, Marsveldplein 5 – 1050 Brussels  
 Tel.: +32 504 70 00  
 Web: www.freshfields.com

**GÓMEZ-ACEBO & POMBO**

Country: Belgium  
 Address: Bld Bischoffsheim 15 – 1000 Brussels  
 Tel.: +32 2 231 12 20  
 Web: www.gomezacebo-pombo.com

**GRUPO GRAN**

Country: Spain  
 Address: Calle de Maldonado, 55 Oficina 117 – 28006 Madrid  
 Tel.: +34 620 77 67 95  
 Web: www.grupogran.es

**GSK STOCKMANN SA**

Country: Luxembourg  
 Address: 44 Av. John F. Kennedy – 1855 Luxembourg  
 Tel.: +352 271 802 00  
 Web: www.gsk-lux.com

**HERBERT SMITH FREEHILLS LLP**

Country: Belgium  
 Address: Rue de Loxum, 25 – 1000 Brussels  
 Tel.: +32 2 511 74 50  
 Web: www.herbertsmithfreehills.com

**IGNACE BRAL BV**

Country: Belgium  
 Address: Gellingstraatje, 1 – 9800 Deinze  
 Tel.: +32 477 036 334  
 Web: www.ignacebral.be

**J&A GARRIGUES SPL**

Country: Belgium  
 Address: Avenue d'Auderghem, 22-28 – 1040 Brussels  
 Tel.: +32 2 545 37 00  
 Web: www.garrigues.com

**K&L GATES LLP**

Country: Belgium  
 Address: Rue de l'Industrie, 26/38 – 1040 Brussels  
 Tel.: +32 2 336 19 00  
 Web: www.klgates.com

**KUTS & CO SERVICES SARL**

Country: Luxembourg  
 Address: 99 Grand Rue – 1661 Luxembourg  
 Tel.: +352 691 369 716  
 Web: www.kuts.co

**LIEDEKERKE WOLTERS WAELEBROEK**

Country: Belgium  
 Address: Boulevard de l'Empereur, 3 – 1000 Brussels  
 Tel.: +32 2 551 16 95  
 Web: www.liedekerke.com

**LINARI LAW FIRM**

Country: Luxembourg  
 Address: 128 Rue du Cimetière – 8018 Luxembourg  
 Tel.: +352 27 11 60 10  
 Web: www.linari-law.lu

**LINKLATERS LLP**

Country: Luxembourg  
 Address: 35 Avenue John F. Kennedy – 1855 Luxembourg  
 Tel.: +352 26 081  
 Web: www.linklaters.com

**LOSSY ADVOCATEN**

Country: Belgium  
 Address: Mechelsesteenweg, 121 – 2018 Antwerp  
 Tel.: +32 3 239 10 15  
 Web: www.lossy-law.eu

**LOYENS & LOEFF**

Country: Luxembourg  
 Address: 18-20, Rue Edward Steichen – 2540 Luxembourg  
 Tel.: +352 466 230 336  
 Web: www.loyensloeff.lu

**MANRESA INDUSTRIAL PROPERTY**

Country: Netherlands  
 Address: Weena 43c – 3013 Rotterdam  
 Tel.: +31 653 820 844  
 Web: www.manresa.pro

**MARIN ANDREU GALLEGO**

Country: Luxembourg  
 Address: Boulevard de la Foire 20 – 1528 Luxembourg  
 Tel.: +352 621 243 110  
 Web: www.linkedin.com/in/marin-andreu-gallego-56332b1a4

**MODO LAW**

Country: Belgium  
 Address: Moortebeekstraat, 1 – 1700 Dilbeek  
 Tel.: +32 25 67 98 00  
 Web: www.modo-law.be

**NAVAS & CUSI**

Country: Spain  
 Address: Calle Velázquez 18, Izda, 28001, Madrid  
 Tel.: +34 915 76 11 50  
 Web: www.navascusi.com

**NORTON ROSE FULBRIGHT**

Country: Belgium  
 Address: Square de Meeûs 5/6 – 1000 Brussels  
 Tel.: +32 2 237 61 11  
 Web: www.nortonrosefulbright.com

**NOTAIRE RÉGIS DESCHAMPS**

Country: Belgium  
 Address: Avenue Georges Eekhoud, 33 – 1030 Brussels  
 Tel.: +32 2 891 00 01  
 Web: www.notairedeschamps.be

**NOVALIS AVOCATS**

Country: Belgium  
 Address: Chaussée de Charleroi, 70/6 – 1060 Brussels  
 Tel.: +32 2 850 93 03  
 Web: www.novalis.law

**OGIER SCS**

Country: Luxembourg  
 Address: 2-4 rue Eugène Ruppert – 2453 Luxembourg  
 Tel.: +352 271 220 00  
 Web: www.ogier.com

**ORYS ADVOCATEN**

Country: Belgium  
 Address: Wolvengracht, 38 bus 2 – 1000 Brussels  
 Tel.: +32 2 410 10 66  
 Web: orys.be

**PÉREZ-LLORCA ABOGADOS**

Country: Belgium  
 Address: Rue Belliard, 9 – 1040 Brussels  
 Tel.: +32 279 67 50  
 Web: www.perezllorca.com

**PHILIPPE & PARTNERS BELGIUM SCRL**

Country: Belgium  
 Address: Chaussée de La Hulpe, 181/9 – 1170 Brussels  
 Tel.: +32 2 250 39 80  
 Web: www.philippelaw.eu

**RAFAËL ÁLVAREZ CAMPA**

Country: Belgium  
 Address: Avenue Louise, 283/19 – 1050 Brussels  
 Tel.: +32 2 640 44 00  
 Web: www.everest-law.eu

**SIMMONS & SIMMONS LUXEMBOURG LLP**

Country: Luxembourg  
 Address: 26A Boulevard Royal – 2449 Luxembourg  
 Tel.: +352 262 116 01  
 Web: www.simmons-simmons.com

**SKADDEN, ARPS, SLATE, MEAGHER & FLOM LLP**

Country: Belgium  
 Address: Avenue Louise 480 – 1050 Brussels  
 Tel.: +32 263 903 00  
 Web: www.skadden.com

**SOCOVHO INTERNATIONAL SPRL**

Country: Belgium  
 Address: Rond Point Robert Schuman, 6 – 1040 Brussels  
 Tel.: +32 476 70 27 18  
 Web: vhointernational.wixsite.com/socovho

**SPANISH VAT SERVICES**

Country: Spain  
 Address: Príncipe de Vergara, 97, 1º A – 28006 Madrid  
 Tel.: +34 650 105 342  
 Web: www.spanishvat.es

**TAXPATRIA TAX & LEGAL**

Country: Belgium  
 Address: Da Vincilaan 1 – 1930 Zaventem  
 Tel.: +32 2 801 13 63  
 Web: www.taxpatria.be

**TIBERGHIE BV**

Country: Belgium  
 Address: Havenlaan 86C bus 419 – 1000 Brussels  
 Tel.: +32 2773 40 42  
 Web: www.tiberghien.com/en/

**URÍA MENÉNDEZ**

Country: Belgium  
 Address: Square de Meeûs, 40 – 1000 Brussels  
 Tel.: +32 26 39 64 64  
 Web: www.uria.com/es/oficinas/Brussels

**VAN BAEL & BELLIS**

Country: Belgium  
 Address: Chaussée de La Hulpe 166, Glaverbel Building – 1170 Brussels  
 Tel.: +32 2 647 73 50  
 Web: www.vbb.com

**VAN CAMPEN LIEM LUXEMBOURG SÀRL**

Country: Luxembourg  
 Address: 2, Rue Dicks – 1417 Luxembourg  
 Tel.: +352 278 606 68  
 Web: www.vancampenliem.com

**VGA LAW & ADR**

Country: Belgium  
Address: Genkersteenweg, 429 – 3500 Hasselt  
Tel.: +32 112 812 80  
Web: www.vga.law

**WILMER CUTLER PICKERING HALE & DORR LLP**

Country: Belgium  
Address: 5 Place du Champ de Mars – 1050 Brussels  
Tel.: +32 22854938  
Web: www.wilmerhale.com

**YVES ULYSSE SOURIS & PARTNERS**

Country: Belgium  
Address: Zeedijk, 384-101 – 8670 Koksijde  
Tel.: +32 58 51 55 82  
Web: www.yvessouris.be

**ASSOCIATIONS, CHAMBERS AND OTHER ENTITIES****ACCÍO CATALONIA TRADE & INVESTMENT**

Country: Belgium  
Address: Rue de la Loi 227 – 1040 Brussels  
Tel.: +32 02 230 97 46  
Web: www.accio.gencat.cat

**APPLIA – HOME APPLIANCE EUROPE**

Country: Belgium  
Address: Boulevard Brand Whitlock 114 – 1200 Brussels  
Tel.: +32 471 294 460  
Web: www.applia-europe.eu

**ASOCIACIÓN ESPAÑOLA DE LA ECONOMÍA DIGITAL**

Country: Spain  
Address: Avenida Diagonal, 532 2ª oficina 209 – 08006 Barcelona  
Tel.: +34 637 753 254  
Web: www.adigital.org

**AWEX – AGENCE WALLONE À L'EXPORTATION ET AUX INVESTISSEMENTS ÉTRANGERS**

Country: Belgium  
Address: Avenue des Dessus de Lives, 6 – 5101 Namur  
Tel.: +32 8 133 28 50  
Web: www.investinwallonia.be

**CDTI-SOST OFFICE**

Country: Belgium  
Address: Rue du Trône, 62 – 1050 Brussels  
Tel.: +32 22 89 26 95  
Web: www.sost.es

**CEN AND CENELEC**

Country: Belgium  
Address: Rue de la Science, 23 – 1040 Brussels  
Tel.: +32 25 50 08 11  
Web: www.cencenelec.eu

**COLEGIO DE REGISTRADORES DE Spain**

Country: Spain  
Address: Calle Príncipe de Vergara, 70 – 28006 Madrid  
Tel.: +34 912 70 16 99  
Web: www.registradores.org

**COLEGIO OFICIAL AGENTES COMERCIALES DE MADRID**

Country: Spain  
Address: Calle Ladera de los Almendros, 40 – 28032 Madrid  
Tel.: +34 917 51 47 88  
Web: www.coaccm.org

**CONEXX-EU**

Country: Belgium  
Address: Avenue Brugmann, 216 – 1050 Brussels  
Tel.: +32 474 36 22 81  
Web: www.conexxeurope.eu

**DELEGACIÓN DEL GOBIERNO DE NAVARRA EN BRUSELAS**

Country: Belgium  
Address: Rue de Toulouse, 30 – 1040 Brussels  
Tel.: +32 27216077  
Web: www.navarra.es

**EPURE**

Country: Belgium  
Address: Rue de la Loi, 223 – 1040 Brussels  
Web: www.epure.org

**EUROPEAN UNION OF PRIVATE HIGHER EDUCATION (EUPHE)**

Country: Belgium  
Address: Rue Belliard, 20 – 1040 Brussels  
Tel.: +34 915 901 010  
Web: www.aeen.org

**FLANDERS INVESTMENT & TRADE**

Country: Belgium  
Address: Boulevard Roi Albert II, 37 – 1030 Brussels  
Tel.: +32 25 04 87 11  
Web: www.flandersinvestmentand-trade.com

**FUNDACIÓN ONCE**

Country: Spain  
Address: Calle Sebastián Herrera, 15 – 28012 Madrid  
Tel.: +34 915 068 888  
Web: www.fundaciononce.es

**HUB.BRUSSELS**

Country: Belgium  
Address: Chaussée de Charleroi 110 – 1060 Brussels  
Tel.: +32 2 422 00 20  
Web: www.hub.brussels

**NATURAL MINERAL WATERS EUROPEAN AISBL**

Country: Belgium  
Address: Place des Barricades, 1 – 1000 Brussels  
Tel.: +32 2 880 20 30  
Web: www.naturalmineralwaterseurope.org

**SEASALT EUROPE ASBL**

Country: Belgium  
Address: Rue Belliard, 20 – 1040 Brussels  
Tel.: +34 917 06 24 16  
Web: www.seasalteurope.com

**UNESID**

Country: Spain  
Address: Calle de Castelló, 128 – 28006 Madrid  
Tel.: +34 915 62 40 18  
Web: www.unesid.org

**CONSULTANTS****ACUMEN PUBLIC AFFAIRS**

Country: Belgium  
Address: Rue de la Loi, 227 – 1040 Brussels  
Tel.: +32 2 669 16 00  
Web: www.acumenpa.com

**AFORE CONSULTING**

Country: Belgium  
Address: Rue du Trône, 100 – 1050 Brussels  
Tel.: +32 2 808 67 69  
Web: www.aforeconsulting.eu

**AGRER GROUP TYPESA**

Country: Belgium  
Address: Avenue Louise, 251 Bte 23 – 1050 Brussels  
Tel.: +32 26 40 63 10  
Web: www.agrer.com

**ARAMO / ARGOS CONSULTING**

Country: Belgium  
Address: Avenue des Arts 12, 7ème – 1210 Brussels  
Tel.: +32 22 19 97 87  
Web: www.argosconsulting.net

**ARCA CONSORTIUM, S.A**

Country: Spain  
Address: Calle Santa Engracia, 6 – 28010 Madrid  
Tel.: +34 913 192 658  
Web: www.arcaconsortium.net

**ATREVIA**

Country: Belgium  
Address: Rue de Trèves, 49-51 – 1040 Brussels  
Tel.: +32 25 11 65 27  
Web: www.atrevia.com

**CSC GLOBAL**

Country: Luxembourg  
Address: 28 Boulevard F.W. Raiffeisen – 2411 Luxembourg  
Tel.: +352 264 491  
Web: www.cscglobal.com

**CSC GROUP**

Country: Luxembourg  
Address: 115 Rouche D'Esch – 1471 Luxembourg  
Tel.: +352 661 964 220  
Web: www.cross-csc.com

**CWCONSULTING**

Country: Belgium  
Address: Rue des Capucins 7 – 1000 Brussels  
Tel.: +32 488 08 82 90  
Web: www.cwconsulting.eu

**DELOITTE LUXEMBOURG**

Country: Luxembourg  
Address: 20 Boulevard de Kockelscheuer – 1821 Luxembourg  
Tel.: +352 451 45 24 37  
Web: www.deloitte.com/lu

**DELOITTE, S.L.**

Country: Spain  
Address: Plaza Pablo Ruiz Picasso, 1-Torre Picasso – 28020 Madrid  
Tel.: +34 915 14 50 00  
Web: www.deloitte.es

**DS GREEN TRANSITION SL**

Country: Spain  
Address: C/ Ciudadela 26 1ºB – 28290 Las Rozas de Madrid  
Tel.: +34 910 228 476  
Web: www.dsconsultores.es

**EPPA SA**

Country: Belgium  
Address: Place de Luxembourg, 2 – 1050 Brussels  
Tel.: +32 2 735 82 30  
Web: www.eppa.com

**ERNST & YOUNG - EY**

Country: Luxembourg  
Address: 35E avenue John F. Kennedy – 1855 Luxembourg  
Tel.: +352 421 241  
Web: www.ey.com/lu/en/home

**EURO-FUNDING EU-PROJECTS SL**

Country: Spain  
Address: Plaza de la Independencia, 8 – 28001 Madrid  
Tel.: +34 917 01 04 90  
Web: www.euro-funding.com

**EUROMED CONSULTING GROUP**

Country: Andorra, Belgium, Spain  
Tel.: +34 647235426  
Web: www.euromed-cg.com

**EUROPA INSIGHTS**

Country: Belgium  
Address: Avenue Louise, 87 – 1050 Brussels  
Tel.: +32 2 513 55 09  
Web: www.europa-insights.com

**EUROVÉRTICE CONSULTORES S.L.**

Country: Spain  
Address: Parque Científico de Murcia, Edificio S 2ª planta – Ctra. de Madrid km 388 – 30100 Murcia  
Tel.: +32 968 277 845  
Web: www.eurovertice.eu

**FIPRA INTERNATIONAL SRL**

Country: Belgium  
Address: 227 Rue de la Loi – 1040 Brussels  
Tel.: +32 2 613 2828  
Web: www.fipra.com

**FLEISHMAN-HILLARD**

Country: Belgium  
Address: Rue Belliard, 40 – 1040 Brussels  
Tel.: +32 230 05 45  
Web: www.fleishmanhillard.com

**FOSTER SWISS, SA**

Country: Switzerland  
Address: Rue de Lausanne, 37, 1º – 1201 Ginebra  
Tel.: +34 912 90 75 25  
Web: www.fosterswiss.com

**FTI CONSULTING**

Country: Belgium  
Address: Av. des Arts, 56 – 1000 Brussels  
Tel.: +32 2 289 09 38  
Web: www.fticonsulting.com

**GLOBAL INVESTMENT & LOAN HISPANO**

Country: Spain  
Address: Avenida Condomina – 03540 Alicante  
Tel.: +34 689750281  
Web: info@globalinvestloan.com

**HARMON CORPORATE AFFAIRS**

Country: Spain  
Address: Calle Serrano 57 – 28006 Madrid  
Tel.: +34 917 65 75 80  
Web: www.harmon.es

**IANUSGROUP**

Country: Belgium  
Address: Avenue Marnix, 30 – 1000 Brussels  
Tel.: +34 677 72 42 51  
Web: www.ianusgroup.com

**IZASKUN BERNAL**

Country: Belgium  
Address: Avenue Kamerdelle, 117 – 1180 Brussels  
Tel.: +32 474 516 862  
Web: www.izaskunbernal.com

**KBK INTERNATIONAL**

Country: Spain  
Address: Emperatriz Eugenia, 21, 6ºD – 18003 Granada  
Tel.: +34 629 902 012  
Web: www.ecosolve.es

**KPMG**

Country: Luxembourg  
Address: 39, Avenue John F. Kennedy – 1855 Luxembourg  
Tel.: +352 22 51 51 1  
Web: www.kpmg.com/lu/en

**KREAB**

Country: Belgium  
Address: Rond-point Robert Schuman, 2 – 1040 Brussels  
Tel.: +32 2 737 69 00  
Web: www.kreab.com

**LLORENTE Y CUENCA BRUSSELS**

Country: Belgium  
Address: Avenue Des Arts, 47 – 1000 Brussels  
Tel.: +32 488 619 354  
Web: www.llorenteycuenca.com

**LOGOS PUBLIC AFFAIRS**

Country: Belgium  
Address: Avenue Des Arts, 47 – 1000 Brussels  
Tel.: +32 232 025 24  
Web: www.logos-pa.com

**LYSIOS PUBLIC AFFAIRS**

Country: Belgium  
Address: Rue d'Arlon 25 – 1000 Brussels  
Tel.: +32 2 893 97 27  
Web: www.lysios.fr

**NAREDO ENERGY CONSULTING**

Country: Belgium  
Address: Chaussée de Vleurgat, 242 – 1050 Brussels  
Tel.: +32 2 645 71 46

**NOVE S.A.**

Country: Brussels  
Address: Rue Paul Emile Janson 6 – 1000 Brussels  
Tel.: +32 2 588 40 80  
Web: www.nove.eu

**NOW PARTNERS**

Country: Luxembourg  
Address: 33 Rue de Gasperich - 5826 Hesperange  
Tel.: +352 691 120 045  
Web: www.nowpartners.lu

**PILOT4DEV**

Country: Belgium  
Address: 21, Rue de la Loyauté - 1090 Luxembourg  
Tel.: +32 497578270  
Web: www.pilot4dev.com

**PLANINLUX**

Country: Luxembourg  
Address: 29, Bld. Prince Henri - 1724 Luxembourg  
Tel.: +352 661 556 691  
Web: www.planinlux.lu

**POLIS LOOK**

Country: Belgium  
Address: Rue des Trios Ponts 43 - 1060 Brussels  
Tel.: +385 9132 22288  
Web: www.polislook.net

**PROSPERO & PARTNERS**

Country: Belgium  
Address: Lange Winkelhaakstraat 34B - 2060 Antwerp  
Tel.: +32 290 0123  
Web: www.prospero.ag

**PWC**

Country: Luxembourg  
Address: 2, Rue Gerhard Mercator - 2182 Luxembourg  
Tel.: +352 494 848-1  
Web: www.pwc.lu

**RESOLUTE CONSULTING**

Country: Spain  
Address: Calle Velázquez 63 - 280011 Madrid  
Tel.: +34 672 21 40 84  
Web: www.resolute.es

**RIDENS PUBLIC AFFAIRS**

Country: Belgium  
Address: Rue Belliard 205 - 1040 Brussels  
Tel.: +32 492 27 62 91  
Web: www.ridenspa.com

**ROLLOUT DEMOCRACY SL**

Country: Spain  
Address: Avenida Lagartijo 20, 1-3 - 14005 Córdoba  
Tel.: +32 496 89 72 99  
Web: www.rolloutdemocracy.eu

**RUBÉN GOTTBORG DE LOS RÍOS**

Country: Luxembourg  
Address: 27c, boulevard Marcel Ca- hen- L-1311 Luxembourg  
Tel.: +352 621 722 791  
Web: www.gottberg.lu

**RUD PEDERSEN PUBLIC AFFAIRS**

Country: Belgium  
Address: Avenue Marnix, 28 - 1000 Brussels  
Tel.: +32 491 96 55 71  
Web: www.rudpedersen.com

**SCHUMAN ASSOCIATES**

Country: Belgium  
Address: Rue Archimède 5 - 1000 Brussels  
Tel.: +32 2 230 74 39  
Web: www.schumanassociates.com

**SCHUTTELAAR & PARTNERS**

Country: Belgium  
Address: Rue Belliard 199, 2nd floor - 1040 Brussels  
Tel.: +32 2 502 2008  
Web: www.schuttelaar-partners.com

**TAX CONSULT NV**

Country: Belgium  
Address: Avenue du Dirigeable, 8 - 1170 Brussels  
Tel.: +32 2 678 17 61  
Web: www.taxconsult.be

**TORREON CONSULTING SRL**

Country: Belgium  
Address: Avenue des Dessus-de-Li- ves, 2- 5101 Namur  
Tel.: +32 468 02 22 78

**TRADE & ACCESS CONSULTING**

Country: Belgium  
Address: Rond point Shcuman 2-4 - 1040 Brussels  
Tel.: +32 2 403 3822  
Web: www.trade-access.eu

**VINCES CONSULTING SL**

Country: Belgium  
Address: Avenue des Arts, 56 - 1000 Brussels  
Tel.: +32 28 01 13 85 / +32 49 62 37 378  
Web: www.vinces.es

**ZABALA INNOVATION**

Country: Belgium  
Address: Rue Belliard 20 - 1040 Brussels  
Tel.: +32 2 513 81 22  
Web: www.zabala.es

**CONSULTANCY & TECHONOLOGY****ARATECH LIFESTYLE TECHNOLOGY**

Country: Spain  
Address: Prado de las Adelfillas, 3 - 28770 Colmenar Viejo  
Tel.: +34 661 736 754  
Web: www.ara-tech.es/es/

**ARPA - EU AFFAIRS & COMMUNICATIONS**

Country: Belgium  
Address Rue Wiertz 25, 1050 Brussels  
Tel.: +32 48 92 31 070  
Web: www.arpa-eu.com

**CODE SHERPAS**

Country: Belgium  
Address: Edmond Vandervaerenstra- at 88 - 1560 Hoeilaart  
Tel.: +32 491 646 687  
Web: www.code-sherpas.rock

**INDRA**

Country: Belgium  
Address: Rue Froissart, n° 95-99, 4 - 1040 Brussels  
Tel.: +32 2 233 38 00  
Web: www.indracompany.com

**ITAO SOFT BELGIUM LTD**

Country: Belgium  
Address: Rue Belliard 20 - 1° - 1040 Brussels  
Tel.: +34 699 508 586

**KNOWLEDGE VALUE CONSULTING**

Country: Belgium  
Address: Avenue Louise, 500 - 1050 Brussels  
Tel.: +34 615449707  
Web: www.kveloce.com

**S2 GRUPO DE INNOVACIÓN EN PRO- CESOS ORGANIZATIVOS SLU**

Country: Spain  
Address: C/ Luis Merelo y Mas, 6 bajo - 46023 Valencia  
Tel.: +34 963 110 300  
Web: www.s2grupo.es

**TECHNOPORT**

Country: Luxembourg  
Address: 9, Avenue des Hauts-For- neaux, L-4362 Esch-Sur-Alzette  
Tel.: +352 54 55 801  
Web: www.technoport.lu

**DEFENCE AND SECURITY****ESCRIBANO MECHANICAL & ENGINEERING S.L.U.**

Country: Belgium  
Address: Avenue des Arts, 3-4-5 - 1040 Brussels  
Tel.: +34 911 898 293  
Web: www.eme-es.com

**GMV AEROSPACE & DEFENCE**

Country: Spain  
Address: Isaac Newton 11 - 28760 Tres Cantos  
Tel.: +34 918 072 100  
Web: www.gmv.com

**JOHN COCKERILL**

Country: Spain  
Address: Rue Alfred Deponthière 44 - 4431 Loncin  
Tel.: +32 4 330 27 40  
Web: www.johncockerill.com

**NAVANTIA**

Country: Spain  
Address: Calle Velázquez 132 - 28006 Madrid  
Tel.: +34 913 35 84 00  
Web: www.navantia.es

**SENER AEROESPACIAL**

Country: Belgium  
Address: Rue d'Arlon 55, 1er étage - 1000 Brussels  
Tel.: +32 289 53 400  
Web: www.aeroespacial.sener

**SPORTS****EUROPADEL Luxembourg ASBL**

Country: Luxembourg  
Address: 72, Grand Rue - 1660 Luxembourg  
Web: www.europadellux.com

**LIGA NACIONAL DE FÚTBOL PROFESIONAL**

Country: Spain  
Address: Calle de Torrelaguna, 60 - 28043 Madrid  
Tel.: +34 912 055 000  
Web: www.laliga.es

**TENNIUM SPAIN, SLU**

Country: Spain  
Address: Calle Caravel-la La Niña, 12, Oficinas A Y B - 08017 Barcelona  
Tel.: +34 930 18 16 46  
Web: www.tennium.com

**UNION OF EUROPEAN CLUBS**

Country: Belgium  
Address: Rue Belliard, 20 - 1040 Brussels  
Tel.: + 385 99 261 5951  
Web: www.ueceurope.org

**EDUCATION****BALLET IRENE**

Country: Belgium  
Address: Rue de la Science 10 - 1000 Brussels  
Web: www.balletirene.be

**EF EDUCATION FIRST BELGIUM**

Country: Belgium  
Address: Avenue Louise 279 - 1050 Brussels  
Tel.: +32 470 89 31 78  
Web: www.ef.be

**FUNDACIÓN UNIVERSITARIA SAN PABLO - CEU**

Country: Spain  
Address: Calle Isaac Peral 58 - 28040 Madrid  
Tel.: +34 914 566 304  
Web: www.ceu.es

**IE UNIVERSITY**

Country: Spain  
Address: Paseo de la Castellana 259, 28046 Madrid  
Tel.: +31 619 80 53 20  
Web: www.ie.edu

**IESE BUSINESS SCHOOL - UNIVERSIDAD DE NAVARRA**

Country: Spain  
Address: Av. Pearson 21, 08034 Barcelona  
Tel.: +34 932 53 42 00  
Web: www.iese.edu

**KIDS & US**

Country: Belgium  
Address: Rue de la Citronelle, 11 - 1348 Louvain-la-Neuve  
Tel.: +32 473 19 94 16  
Web: www.kidsandus.be

**LAURA PRADES CLAESSENS**

Country: Luxembourg  
Address: 8D Rue Collart - 8414 Luxembourg  
Tel.: +352 621 463 468  
Web: www.laurapradesclaessens.com

**MASHA TARLE**

Country: Belgium  
Address: Brussels  
Tel.: +32 48 76 11 367  
Web: www.mashatarle.com

**UNIVERSIDAD NACIONAL DE EDUCACIÓN A DISTANCIA (UNED)**

Country: Belgium  
Address: Avenue Tervuren, 168 bte. 23 - 1150 Brussels  
Tel.: +32 2 215 29 98  
Web: www.uned.es/ca-Bruxelles

**UNIVERSIDAD REY JUAN CARLOS**

Country: Spain  
Address: C/ Tulipán s/n - 28933 Madrid  
Tel.: +34 914 88 93 09  
Web: www.urjc.es

**MANUFACTURE AND ASSEMBLY OF CAPITAL GOODS****ACERINOX BENELUX SA**

Country: Belgium  
Address: Avenue de Tervuren, 100 - 1040 Brussels  
Tel.: +32 27 43 22 00  
Web: www.acerinox.es

**FINANCE****A&G LUXEMBOURG AM**

Country: Luxembourg  
Address: 56, Grand-Rue - 1660 Luxembourg  
Tel.: +352 278 606 05  
Web: www.ayg.es

**ADEPA GLOBAL SERVICES**

Country: Luxembourg  
Address: 6A, Rue Gabriel Lipp- mann-Munsbach - 5365 Luxembourg  
Tel.: +352 268 980 25  
Web: www.adepa.com

**ALALUZ CAPITAL**

Country: Spain  
Address: Plaza de la Independencia, 8, 3ºD - 28001 Madrid  
Tel.: +34 917 52 09 18  
Web: www.alaluzcapital.com

**ALLFUNDS BANK INTERNATIONAL**

Country: Luxembourg  
Address: 30, Boulevard Royal - 2449 Luxembourg  
Tel.: +352 274 801 00  
Web: www.allfunds.com

**ANDBANK ASSET MANAGEMENT LUXEMBOURG**

Country: Luxembourg  
Address: Rue Jean Monnet 4 - 2180 Luxembourg  
Tel.: +352 227 497 61  
Web: www.andbank.com/luxem- bourg/

**ANDBANK LUXEMBOURG S.A.**

Country: Luxembourg  
Address: Rue Jean Monnet 4 - 2180 Luxembourg  
Tel.: +352 227 497 61  
Web: www.andbank.com/luxem- bourg/

**ANTWORT CAPITAL**

Country: Luxembourg  
Address: 13, rue Aldringen - 2440 Luxembourg  
Tel.: +352 206 011 41  
Web: www.antwort.lu

**ASOCIACIÓN ESPAÑOLA DE BANCA**

Country: Belgium  
Address: Avenue des Arts, 56 - 1000 Brussels  
Tel.: +34 91 789 13 11  
Web: www.aebanca.com

**ASSOCIATION LUXEMBOURGEOISE DES FONDS D'INVESTISSEMENT (ALFI)**

Country: Luxembourg  
Address: 12 rue Erasme - 1468 Luxembourg  
Tel.: +352 223 02 61  
Web: www.alfi.lu

**AZTEC FINANCIAL SERVICES**

Country: Luxembourg  
Address: Rue Lou Hammer, 8 - 1748 Luxembourg  
Tel.: +352 691 616 029  
Web: www.aztec.group

**BANCA MARCH**

Country: Luxembourg  
Address: 21-25, Allée Scheffer – 2520 Luxembourg  
Tel.: +352 262 033 32  
Web: www.bancamarch.es

**BANCO BILBAO VIZCAYA ARGENTARIA (BBVA)**

Country: Belgium  
Address: Cantersteen, 47 – 1000 Brussels  
Tel.: +32 2 500 33 65  
Web: www.bbva.be

**BANKINTER LUXEMBOURG**

Country: Luxembourg  
Address: 37, Avenue J.F.Kennedy – 1855 Luxembourg  
Tel.: +352 202 101 20  
Web: www.bankinter.lu

**BANQUE DE LUXEMBOURG**

Country: Luxembourg  
Address: 14, Boulevard Royal – 2499 Luxembourg  
Tel.: +352 499 243 778  
Web: www.banquedeluxembourg.com

**BEKA CREDIT SL**

Country: Spain  
Address: Calle Serrano, 88, 4ª planta – 28006 Madrid  
Tel.: +34 914 36 78 00  
Web: en.bekafinance.com/beka-credit

**BNP PARIBAS LUXEMBOURG BRANCH, SECURITIES SERVICES**

Country: Luxembourg  
Address: 60 avenue J.F. Kennedy – 1855 Luxembourg  
Web: www.securities.cib.bnpparibas/luxembourg

**CA INDOSUEZ WEALTH MANAGEMENT**

Country: Luxembourg  
Address: 39 Allée Scheffer – 2520 Luxembourg  
Tel.: +352 24 67 57 83  
Web: www.luxembourg.ca-indosuez.com

**CACEIS**

Country: Luxembourg  
Address: 14 Porte de France, Esch sur Alzette  
Tel.: +352 260 550 96  
Web: www.caceis.com/who-we-are/where-to-find-us/luxembourg/

**CAIXABANK ASSET MANAGEMENT LUXEMBOURG S.A.**

Country: Luxembourg  
Address: 46b, avenue J.F. Kennedy – 1855 Luxembourg  
Tel.: +352 206 013 83  
Web: www.caixabankamlux.com

**CAIXABANK S.A.**

Country: France  
Address: 45-49 Rue de Monceau – 75008 Paris  
Tel.: +33 0145019611  
Web: www.caixabank.fr

**CAIXABANK WEALTH MANAGEMENT LUXEMBOURG**

Country: Luxembourg  
Address: 46b, Avenue John F Kennedy – 1855 Luxembourg  
Tel.: +352 27 562 020  
Web: www.caixabankwealthmanagement.lu

**CARNE GROUP**

Country: Ireland  
Address: 2nd Floor, Block E, Iveagh Court, Harcourt Road – D2 Dublin  
Tel.: +352 264 958 441 7  
Web: www.cecabank.es

**CECABANK LUXEMBOURG BRANCH**

Country: Luxembourg  
Address: Rue Hildegard von Bingen, 2 – 1282 Luxembourg  
Tel.: +352 267 32 31  
Web: www.carnegroup.com

**CREAND WEALTH & SECURITIES**

Country: Luxembourg  
Address: 30, Boulevard Royal – 2449 Luxembourg  
Tel.: +352 27207700  
Web: www.creand.lu

**DS ADVISORY SERVICES**

Country: Luxembourg  
Address: 71B rue de Luxembourg – 8140 Bridel  
Tel.: +352 691717568  
Web: www.dscompliance.lu

**EBURY**

Country: Spain  
Address: Avd. General Perón, 40, 4a – 28020 Madrid  
Tel.: +34 918 293 722  
Web: www.ebury.es

**EDMOND DE ROTHSCHILD ASSET MANAGEMENT (LUXEMBOURG)**

Country: Luxembourg  
Address: 4, rue Robert Stumper – 2557 Luxembourg  
Tel.: +352 248 827 28  
Web: www.edmond-de-rothschild.com/en

**ELIUS CONSULTING**

Country: Luxembourg  
Address: 152, Rue Albert Unden – 2652 Luxembourg  
Tel.: +352 69 1958278  
Web: www.eliusconsulting.com

**FE FUNDINFO**

Country: Luxembourg  
Address: Bd. Joseph II, 35ª – 1840 Luxembourg  
Tel.: +352 28 370 425  
Web: www.fefundinfo.com

**FUNDCRAFT**

Country: Luxembourg  
Address: 12 rue des Merovingiens – 8070 Luxembourg  
Web: www.fundcraft.lu

**INVERDIS**

Country: Luxembourg  
Address: 35a Av. John F. Kennedy, Kirchberg – 1885 Luxembourg  
Tel.: +34 91 400 14 00  
Web: www.inverdis.es

**JEAN-BAPTISTE JOANNARD-LARDANT**

Country: Luxembourg  
Address: Legal, 2, rue Gerhard Mercator, 2182 Luxembourg  
Tel.: +352 621 333 106  
Web: www.pwclegal.lu/en/contacts/j/jean-baptiste-joannard-lardant.html

**LNV DIRECTORSHIP SERVICES SARL**

Country: Luxembourg  
Address: 12 Rue des Champs-L-5953 Itzig  
Tel.: +352 621 485 091

**MARKET LAB LUXEMBOURG**

Country: Luxembourg  
Address: 8-10 Avenue de la Gare – 1610 Luxembourg  
Tel.: +34 609 338 204  
Web: www.flabfunds.com

**MASTERCARD**

Country: Belgium  
Address: Chau. de Tervuren 198ª – 1410 Waterloo  
Tel.: +32 2 352 51 11  
Web: www.mastercard.be

**ME BUSINESS SOLUTIONS SÀRL**

Country: Luxembourg  
Address: 16, Rue Jean, Pierre Basseur – 1258 Luxembourg  
Tel.: +352 263 845 111  
Web: www.mebs.lu

**NORDEA INVESTMENT FUND**

Country: Luxembourg  
Address: Rue de Neudorf 562 – 2220 Luxembourg  
Tel.: +352 278 653 56  
Web: www.nordea.lu

**OEL FUND SERVICES**

Country: Luxembourg  
Address: 30 Boulevard Royal – 2449 Luxembourg  
Web: www.oelfunds.com

**PELLIGA FAMILY OFFICE**

Country: Luxembourg  
Address: 1A, Heienhaff, Senningerberg – 1736 Luxembourg  
Tel.: +352 661 634 001

**PORTOBELLO CAPITAL GESTIÓN SGEIC**

Country: Luxembourg  
Address: 13 rue Aldringen – 1118 Luxembourg  
Tel.: +34 91 431 80 71  
Web: www.portobellocapital.es

**PPL ADVISORS SARLS**

Country: Luxembourg  
Address: 15 Rue de Gibraltar – 1624 Luxembourg  
Tel.: +352 691 157 735  
Web: www.luxpro.lu/pro/ppl-advisor-sarls/

**QUINTET PRIVATE BANK**

Country: Luxembourg  
Address: 43 Boulevard Royal – 2955 Luxembourg  
Tel.: +352 621321535  
Web: www.quintet.com

**RENTA 4 LUXEMBOURG S.A.**

Country: Luxembourg  
Address: 70 Grand Rue – 1660 Luxembourg  
Tel.: +352 20 800 119 01  
Web: www.renta4.lu

**REPSOL EUROPE FINANCE**

Country: Luxembourg  
Address: 11 Rue Aldringen – 1118, Luxembourg  
Tel.: +352 278 600 64  
Web: www.repsol.com/en/shareholders-and-investors/fixed-income-and-credit-ratings/ref/index.cshtml

**S.A. CONLE FINANCE**

Country: Belgium  
Address: Rue Belliard, 20 – 1040 Brussels

**SANTANDER ASSET MANAGEMENT LUXEMBOURG**

Country: Luxembourg  
Address: Rue de Bitbourg 19, 1273 Luxembourg  
Tel.: +352 27 773 301  
Web: www.santanderassetmanagement.lu

**SANTANDER CONSUMER BANK SA**

Country: Belgium  
Address: Guldensporenpark, 81 – 9820 Merelbeke  
Tel.: +32 22 865 511  
Web: www.santanderconsumerbank.be

**SOCIÉTÉ DE LA BOURSE DE LUXEMBOURG S.A.**

Country: Luxembourg  
Address: 35ª, Boulevard Joseph II – 1840 Luxembourg  
Tel.: +352 47 7936 471  
Web: www.bourse.lu

**SUES FINANCE SA**

Country: Belgium  
Address: Rue Belliard, 20 – 1040 Brussels

**TMF LUXEMBOURG S.A.**

Country: Luxembourg  
Address: 46 A, Avenue John F. Kennedy – 1855 Luxembourg  
Tel.: + 352 427 17 11  
Web: www.tmf-group.com

**TRANSFAIR PRICING SOLUTIONS**

Country: Luxembourg  
Address: 46 A, Avenue John F. Kennedy – 1855 Luxembourg  
Tel.: +352 621 364 686  
Web: www.ffps.lu

**WEREC FINANCE SA**

Country: Belgium  
Address: Rue Belliard, 20 – 1040 Brussels

**ZEDRA FUNDS LUXEMBOURG**

Country: Luxembourg  
Address: 11 Avenue de la Porte-Neuve, 2227 Luxembourg  
Tel.: +352-2211-90-310  
Web: www.zedra.com

**INDUSTRY AND ENERGY****AIRBUS**

Country: Belgium  
Address: Avenue Marnix 28 (4th floor) – 1000 Brussels  
Tel.: +3225047811  
Web: www.airbus.com

**ARCELORMITTAL EUROPE SA**

Country: Belgium  
Address: Boulevard de l'Impératrice, 66 – 1000 Brussels  
Web: corporate.arcelormittal.com

**EXXONMOBIL**

Country: Belgium  
Address: Hermeslaan 2 – 1831 Machelen  
Tel.: +32 15 53 84 89  
Web: www.exxonmobil.be

**IBERDROLA**

Country: Belgium  
Address: Avenue d'Auderghem, 22-28 – 1040 Brussels  
Tel.: +32 2 740 19 19  
Web: www.iberdrola.es

**MOEVE**

Country: Spain  
Address: Paseo de la Castellana 259 A – 24046 Madrid  
Tel.: +34 913 376 000  
Web: www.moeveglobal.com

**NATURGY**

Country: Spain  
Address: Av. América, 38 – 28028 Madrid  
Tel.: +34 646 336 647  
Web: www.naturgy.com

**PRIMAGAS ENERGÍA S.A.U.**

Country: Spain  
Address: Paseo de Gracia, 53, 1ª planta, 08007 Barcelona  
Tel.: +34 629 31 26 68  
Web: www.primagas.es

**REPSOL**

Country: Spain  
Address: Méndez Álvaro, 44 – 28045 Madrid  
Tel.: +34 917 53 03 72  
Web: www.repsol.es

**VALTALIA INVESTMENTS**

Country: Spain  
Address: Calle Curros Enríquez, 1-8ª – 32003 Ourense  
Tel.: +34 988 512 253  
Web: www.valtalia.com

**CULTURAL INDUSTRIES AND CREATIVITY****ARTIAPLACE**

Country: Luxembourg  
Address: 7, Place Clairefontaine – 1341 Luxembourg  
Tel.: +34 651 31 51 40  
Web: www.artiaplace.com

**BRIGIT ART GALLERY**

Country: Belgium  
Address: Rue de Rollebeek, 36 – 1000 Brussels  
Tel.: +32 497156198  
Web: www.brigitartgallery.be

**CENTRO CULTURAL METAPROSA**

Country: Belgium  
 Address: Chaussée de Saint Pierre, 9 - 1040 Brussels  
 Tel.: +34 606607218  
 Web: www.metaprosabe

**FESTIVAL KINOLATINO**

Country: Belgium  
 Address: Rue Floris 16 - 1030 Brussels  
 Tel.: +32 476 594 655  
 Web: www.kinolatino.be

**LIDIA PEÑA**

Country: Belgium  
 Address: Rue Le Tintoret 14 - 1000 Brussels  
 Tel.: +32 456 322 866  
 Web: www.lidiapenya.com

**MARCELA PAZ ROJAS PRADENAS**

Country: Belgium  
 Address: Place Maurice van Meenen, 5 - 1060 Brussels  
 Web: pazpradenasvin@gmail.com

**MEDIAPRO**

Country: Belgium  
 Address: Charlemagne 1, piso 1-1041 Brussels  
 Tel.: +32 2 2800354  
 Web: www.mediapro.tv

**NETFLIX**

Country: Belgium  
 Address: Square de Meeûs, 5-6 - 1000 Brussels  
 Tel.: +31 2 079 860 00  
 Web: www.netflix.com

**TEATROBE**

Country: Belgium  
 Address: Promenade Hippolyte Rolin 14/9 - 1040 Etterbeek  
 Tel.: +32 486 766 545  
 Web: www.teatrobe.eu

**CIVIL ENGINEERING & CONSTRUCTION & ARCHITECTURE****BARCELONA TECHNICAL CENTER**

Country: Spain  
 Address: Calle Juan de la Cierva (Pol. Ind. La Torre), 2 - 08760 Martorell  
 Tel.: +34 935 02 93 61  
 Web: www.btechc.com

**CAF (CONSTRUCCIONES Y AUXILIAR DE FERROCARRILES)**

Country: Spain  
 Address: C/ José Miguel Iturrioz, 26 - 20200 Beasain  
 Tel.: +34 943 88 01 00  
 Web: www.caf.net

**COSENTINO GLOBAL SLU**

Country: Spain  
 Address: Ctra. A334 Baza-Huércal Overa, km 59 - 04850 Cantoria (Almería)  
 Tel.: +34 950 444 175  
 Web: www.cosentino.com

**CRISTINA ROBINA**

Country: Belgium  
 Address: Beeldhouwersstraat 42 - 9040 Gent  
 Tel.: +32 478 397 803  
 Web: www.cristinarobina.com

**DLINEA ARCHITECTURE & DESIGN**

Country: Luxembourg  
 Address: 42, rue des Prés - 7246 Helmsange  
 Tel.: +352 661 603 862  
 Web: www.dl-arc.com

**FRAME STUDIO SPRL**

Country: Belgium  
 Address: Emile Duray, 38 - 1050 Brussels  
 Tel.: +32 496 08 43 36  
 Web: www.frame-architects.com

**HD INTERIORS**

Country: Belgium  
 Address: Pl. Albert Leemans, 13 - 1050 Brussels  
 Tel.: +32 496 49 52 05  
 Web: www.interiorshd.com

**IDOM CONSULTING ENGINEERING ARCHITECTURE S.A.**

Country: Spain  
 Address: Avda Zarandoa 23, 48015 Bilbao  
 Tel.: +34 944797600  
 Web: www.idom.com

**SACYR PROYECTA, S.A.**

Country: Spain  
 Address: Calle Juan Esplandiú, Num 11, Planta 13 - 28007 Madrid  
 Tel.: +34 985 984 000  
 Web: www.sacyr.com

**STUDIO PALOS**

Country: Luxembourg  
 Address: Eechegassel, 5 - 6129 Luxembourg  
 Tel.: +352 691 110 379  
 Web: www.studiopalos.com

**TÉCNICAS REUNIDAS**

Country: Spain  
 Address: Avenida de Burgos, 89 - 28050 Madrid  
 Tel.: +34 915 92 03 00  
 Web: www.tecnicasreunidas.es

**REAL ESTATE****COHABS LUXEMBOURG**

Country: Luxembourg  
 Address: 21 Rue Glesener - 1631 Luxembourg  
 Tel.: +352 661450451  
 Web: www.cohabs.com

**CSSCONSULTING**

Country: Spain  
 Address: Calle Salines De Santa Pola, 14 - 46117 Valencia  
 Tel.: +34 618 792 608  
 Web: www.cssconsulting.es

**PONTEGADEA**

Country: Luxembourg  
 Address: Rue Gabriel Lippmann, 6A - 5365 Luxembourg

**TM GRUPO INMOBILIARIO**

Country: Spain  
 Address: Avenue Louise 65, Box 11 - 1050 Brussels  
 Tel.: +34 965 712 011  
 Web: www.tmgrupoinmobiliario.com

**LEISURE, TOURISM AND HOTEL INDUSTRY****BRUSSELS MARRIOT HOTEL GRAND PLACE**

Country: Belgium  
 Address: Rue Auguste Orts 3-7 - 1000 Brussels  
 Tel.: +32 494 516 062  
 Web: www.marriott.com

**BUENDÍA TOURS**

Country: Belgium  
 Address: Place de Gudule, 14 - 1000 Brussels  
 Tel.: +32 471587908  
 Web: www.buendiatours.com

**CHURROS VALYSER SPRL**

Country: Belgium  
 Address: Jean Baptiste Nowelei, 38 - 1800 Vilvoorde  
 Tel.: +32 471 294 262

**EUROSTARS HOTELS**

Country: Belgium  
 Address: Avenue de Tervueren, 134 - 1150 Brussels  
 Tel.: +32 2 741 85 11  
 Web: www.eurostarshotels.com

**GASTROCÓMICA**

Country: Belgium  
 Address: Rue Gouttier 6 - 1040 Waterloo  
 Tel.: +32 479 242 608  
 Web: www.delaabuella.eu

**HISPANIA BRUSSELS S.A**

Country: Belgium  
 Address: Rue Bodenbroek, 2/4 - 1000 Brussels  
 Tel.: +32 2 512 91 32  
 Web: www.hispaniabrusseles.com

**HOTEL CATALONIA BRUSSELS**

Country: Belgium  
 Address: Avenue de Haut Pont, 2 - 1060 Brussels  
 Tel.: +32 2 340 34 00  
 Web: www.hoteles-catalonia.com

**HOTEL NH COLLECTION BRUSSELS GRAND SABLON**

Country: Belgium  
 Address: Rue Bodenbroek, 2-4 - 1000 Brussels  
 Tel.: +32 2 518 11 00  
 Web: www.nh-hoteles.es/hotel/nh-collection-brussels-grand-sablou

**LE LOUISE HOTEL BRUSSELS**

Country: Belgium  
 Address: Avenue de la Toison d'or, 40 - 1050 Brussels  
 Tel.: +32 496 165 949  
 Web: www.le-louise-brussels.com

**LEM ANTWERPEN NV**

Country: Belgium  
 Address: Luchthavenlei s/n - 2100 Antwerp  
 Tel.: +32 3 285 65 00  
 Web: www.antwerp-airport.be

**LEM OSTEND-BRUGES NV**

Country: Belgium  
 Address: Nieuwpoortse Steenweg, 887 - 8400 Ostende  
 Tel.: +32 5 951 12 10  
 Web: www.ostendairport.aero

**MAS APARTHOTEL EU**

Country: Belgium  
 Address: Rue de Spa 14 - 1000 Brussels  
 Tel.: +32 495 036 011  
 Web: www.masaparthotel.eu

**MELIÁ LUXEMBOURG SARL**

Country: Luxembourg  
 Address: 1, Park Dräi Eechelen - 1499 Luxembourg  
 Tel.: +352 273 331  
 Web: www.melia.com

**OTHER GOODS AND SERVICES****DANZER HOLDING AZ**

Country: Austria  
 Address: Hintere Achmühlerstrasse, 1 - 6850 Dornbirn  
 Tel.: +43 5572 39 44 90  
 Web: www.danzer.com

**PHARMACEUTICALS AND BIOTECHNOLOGY****LABORATORIOS FARMACÉUTICOS ROVI S.A.**

Country: Spain  
 Address: Calle de Julián Camarillo, 35 - 28037 Madrid  
 Tel.: +34 913 756 334  
 Web: www.rovi.es

**PFIZER INTERNATIONAL COMPANY**

Country: Belgium  
 Address: Hoge Wei, 10 - 1930 Zaventem  
 Tel.: +32 2 722 02 11  
 Web: www.pfizer.com

**HUMAN RESOURCES****ALCANDA MATCHMAKING**

Country: Spain  
 Address: Calle Arcos de la Frontera, 3 Bajo E - 28023 Madrid  
 Tel.: +34 619 962 199  
 Web: www.alcandamatchmaking.com

**ANIDRIS**

Country: Luxembourg  
 Address: Rue Edmont Reuter, 17 - 5326 Luxembourg  
 Tel.: +352 266 793 1  
 Web: www.anidris.lu

**PRO-PAY**

Country: Belgium  
 Address: Sint-Stevens-Woluwestraat 55 - 1130 Brussels  
 Tel.: +32 2 302 19 01  
 Web: www.propay.be

**SD WORX BELGIUM NV**

Country: Belgium  
 Address: Brouwersvliet 5 B, 2000 Antwerp  
 Tel.: +32 4 274 38 81  
 Web: www.sdworx.com

**RETAIL****AMAZON EUROPE**

Country: Luxembourg  
 Address: 38, Avenue J.F. Kennedy - 1855 Luxembourg  
 Tel.: +34 620 286 113  
 Web: www.aboutamazon.eu/who-we-are/

**FLORENCIA MARIEL FERRARO**

Country: Luxembourg  
 Address: Rue Général Patton 24A - 2317 Luxembourg  
 Tel.: +33 766 476 175  
 Web: www.ferra-studio.com

**COMMUNICATION SERVICES****BUROTIP**

Country: Belgium  
 Address: Rue Culée 64 - 1410 Waterloo  
 Tel.: +32 2 357 54 60

**DAVIDE CAVANNA**

Country: Luxembourg  
 Address: 23 Dernier Sol, 2543 Luxembourg  
 Tel.: +352 691 802 819  
 Web: www.traductor.lu

**IDEST COMMUNICATION**

Country: Belgium  
 Address: Rue de l'Eclipse, 6 - 1000 Brussels  
 Tel.: +32 2 543 18 60  
 Web: www.idestnet.com

**METAFRASI TRADUCCIÓN Y COMUNICACIÓN SL**

Country: Spain  
 Address: Rambla de Catalunya, 124 - 08008 Barcelona  
 Tel.: +34 934 154 828  
 Web: www.metafrasi.net

**TRADUCIDO Y JURADO**

Country: Belgium / Spain  
 Address: Rue Belliard, 40 Spaces - 1040 Brussels  
 Tel.: +32 478 04 78 74 / +34 622 47 46 18

**HEALTH AND SANITATION SERVICES****BORGINSOLE**

Country: Belgium  
 Address: Toresstraat 89 - 3110 Rotselaar  
 Tel.: +32 495 271 402  
 Web: www.borginsole.com

**CABINET D'ORTHODONTIE SANCHEZ**

Country: Luxembourg  
 Address: 7, Route de Luxembourg - 7241 Luxembourg  
 Tel.: +352 263 324 38  
 Email: info@cabinet-sanchez.lu

**ESTHER RUIZ DE OÑA**

Country: Luxembourg  
 Address: 51, Bld Grande-Duchesse Charlotte - 1331 Luxembourg  
 Tel.: +35 269 170 4393  
 Web: en.doctena.lu/doctor/Esther\_Ruiz\_De\_Ona-985787#16947



**SUSANA ABRASH - CABINET DENTAIRE**  
 Country: Luxembourg  
 Address: 245, Rue de Beggen - 1221 Beggen  
 Tel.: +352 661 831 129  
 Web: www.abrashcabinetdentaire.lu

**BUSINESS SERVICES**

**ARANTZA BAYOD**  
 Country: Belgium  
 Address: Pikdorenveld 4 - 1900 Kraainem  
 Tel.: +32 467 09 85 73  
 Web: www.bayod.com

**MONDRAGON CORPORACIÓN COOPERATIVA**  
 Country: Spain  
 Address: Paseo José María Arizmendi-  
 diarrieta, 5 - 20500 Arrasate-Mon-  
 dragón  
 Tel.: +34 943 779 369  
 Web: www.mondragon-corporation.com

**RUBICON ACCOUNTING SARL**  
 Country: Luxembourg  
 Address: 8A Boulevard de la foire - L-1528 Luxembourg  
 Tel.: +352 262 019 72  
 Web: www.rubicon-accounting.lu

**TOMBO TRIBE CONSULTING**  
 Country: Belgium  
 Address: Brussels  
 Tel.: +32 476 247 157  
 Web: www.tombotribe.com

**TROOSTWIJK-ROUX EXPERTISES**  
 Country: Belgium  
 Address: Verbindingsdok-Weestkaai, 12A - 2000 Antwerp  
 Tel.: +32 3 287 62 87  
 Web: www.trex.be

**TELECOMMUNICATIONS, INTERNET**

**TEIMAS GLOBAL**  
 Country: Belgium  
 Address: Rue Belliard, 20 - 1040 Brussels  
 Tel.: +34 981 52 32 26  
 Web: www.teimas.com

**TELEFÓNICA SA**  
 Country: Belgium  
 Address: Avenue des Arts, 58 - 1000 Brussels  
 Tel.: +32 2 230 95 55  
 Web: www.telefonica.es

**VISUAL ONLINE S.A.**  
 Country: Luxembourg  
 Address: 6, Rue Goell - 5326 Luxembourg  
 Tel.: +352 42 44 11 1  
 Web: www.vo.lu

**TEXTILE, CLOTHING AND FOOTWEAR**

**CLOT FITNESS WEAR**  
 Country: Belgium  
 Address: Rue du cornef, 195 - 1040 Brussels  
 Tel.: +34 644 534 156  
 Web: www.clotfitnesswear.com

**INFORMATION AND COMMUNICATION TECHNOLOGIES (ICT)**

**GLOVO**  
 Country: Spain  
 Address: C/Llull, 108, 08005 Barcelona  
 Tel.: + 34 695 821 879  
 Web: www.about.glovoapp.com

**TRANSPORT AND COMPLEMENTARY SERVICES**

**ABERTIS INFRAESTRUCTURAS, S.A.**  
 Country: Spain  
 Address: Paseo de la Castilla, 89 9ª planta - 28034 Madrid  
 Tel.: +34 915951000  
 Web: www.abertis.com

**AENA**  
 Country: Spain  
 Address: Calle Peonías 12 - 28042 Madrid  
 Tel.: +34 913 21 10 00  
 Web: www.aena.es

**AIR EUROPA**  
 Country: Belgium  
 Address: Rue Belliard, 20 - 1040 Brussels  
 Tel.: +32 2 273 16 58  
 Web: www.aireuropa.com

**AUTOMOBILE CLUB DU LUXEMBOURG**  
 Country: Luxembourg  
 Address: 54, route de Longwy, L-8080 Bertrange  
 Tel.: +352 450045-1  
 Web: www.acl.lu

**AUTORIDAD PORTUARIA DE BILBAO**  
 Country: Spain  
 Address: Campo Volantín, 37 - 48007 Bilbao  
 Tel.: +34 944 871 200  
 Web: www.bilbaoport.eus

**CUBE4T8**  
 Country: Luxembourg  
 Address: 5, Rue des Joncs - 1818 Luxembourg  
 Tel.: +352 288 368 483 3  
 Web: www.cube4t8.lu

**EUROPEAN REGIONS AIRLINE ASSOCIATION**  
 Country: United Kingdom  
 Address Park House, 127 Guilford Road - GU185RA Lightwater  
 Tel.: +44 1276 856495  
 Web: www.eraa.org

**FINNLINES BELGIUM NV**  
 Country: Belgium  
 Address: Blikken - Haven 1333 - 9130 Verrebroek  
 Tel.: +32 3 570 95 30  
 Web: www.finnlines.com

**IBERIA**  
 Country: Belgium  
 Address: Pegasuslaan, 5 - 1831 Diegem  
 Tel.: +32 2 548 03 21  
 Web: www.iberia.com

**INTERNATIONAL CONSOLIDATED AIRLINES GROUP SA**  
 Country: Spain  
 Address: El Caserio, Iberia Zona Industrial 2 (La Muñoza) Camino de la Muñoza s/n, 28042 Madrid  
 Tel.: +34 639 31 33 22  
 Web: www.iairgroup.com


**INTERPARKING SA**  
 Country: Belgium  
 Address: Rue Brederode, 9 - 1000 Brussels  
 Tel.: +32 2 549 58 11  
 Web: www.interparking.com

**PUTTERS INTERNATIONAL**  
 Country: Belgium  
 Address: Erasmuslaan, 30 - 1804 Vilvoorde  
 Tel.: +32 272 14 040  
 Web: www.putters.be

**SANTA FE RELOCATION**  
 Country: Belgium  
 Address: Jan Baptist Vinkstraat, 9 - 3070 Kortenberg  
 Tel.: +32 2 757 9285  
 Web: www.santaferelo.com


# My Welcome package

Start your business in Brussels with **"My Welcome Package"** a set of services offered hub.brussels for foreign entrepreneurs wishing to get their company off to a flying start in Brussels.




**3 MONTHS FREE HOSTING IN OUR OFFICES**

Access our workspaces in hub.brussels offices to start your business in the best possible way.




**ACCESS TO THE WHY.BRUSSELS PARTNERS NETWORK PLATFORM**

Find effective collaborations using our platform of local professionals.



**PERSONALISED SUPPORT FROM OUR EXPERTS**

Receive ideal support from our experts to get you started.



**SEARCH FOR BUSINESS LOCATION**

Search for a business location (offices, coworking spaces, warehouse) during a half day visit.

**+ Premium**

Premium services are part of **"My Welcome Package"**, entrepreneurs are also entitled to certain additional services free of charge. As a foreign entrepreneur wishing to settle in Brussels why.brussels, provides you with **3 premium services out of 5** to be used in any way you wish by taking up the services we offer.



**Would you like to receive more information?**  
 Please contact us: [invest@hub.brussels](mailto:invest@hub.brussels)



**why.brussels**  
 an initiative of hub.brussels



For more info check the QR code [www.why.brussels.be](http://www.why.brussels.be)



**Cámara**  
Official Spanish Chamber of Commerce  
in Belgium and Luxembourg

**+100  
YEARS**

Strengthening relations  
between Spain, Belgium  
and Luxembourg

Contact info:

[www.e-camara.com](http://www.e-camara.com)

Avenue des Art, 1, 9<sup>o</sup> - 1210 Brussels

[info@e-camara.com](mailto:info@e-camara.com) | +32 2 517 17 40

[luxemburgo@e-camara.com](mailto:luxemburgo@e-camara.com) | +352 661 404 399